

Restricted

THE INFORMATION GIVEN IN THIS DOCUMENT IS NOT TO BE COMMUNICATED, EITHER DIRECTLY OR INDIRECTLY TO THE PRESS OR TO ANY PERSON NOT AUTHORIZED TO RECEIVE IT.



AUSTRALIAN MILITARY FORCES

Identification List

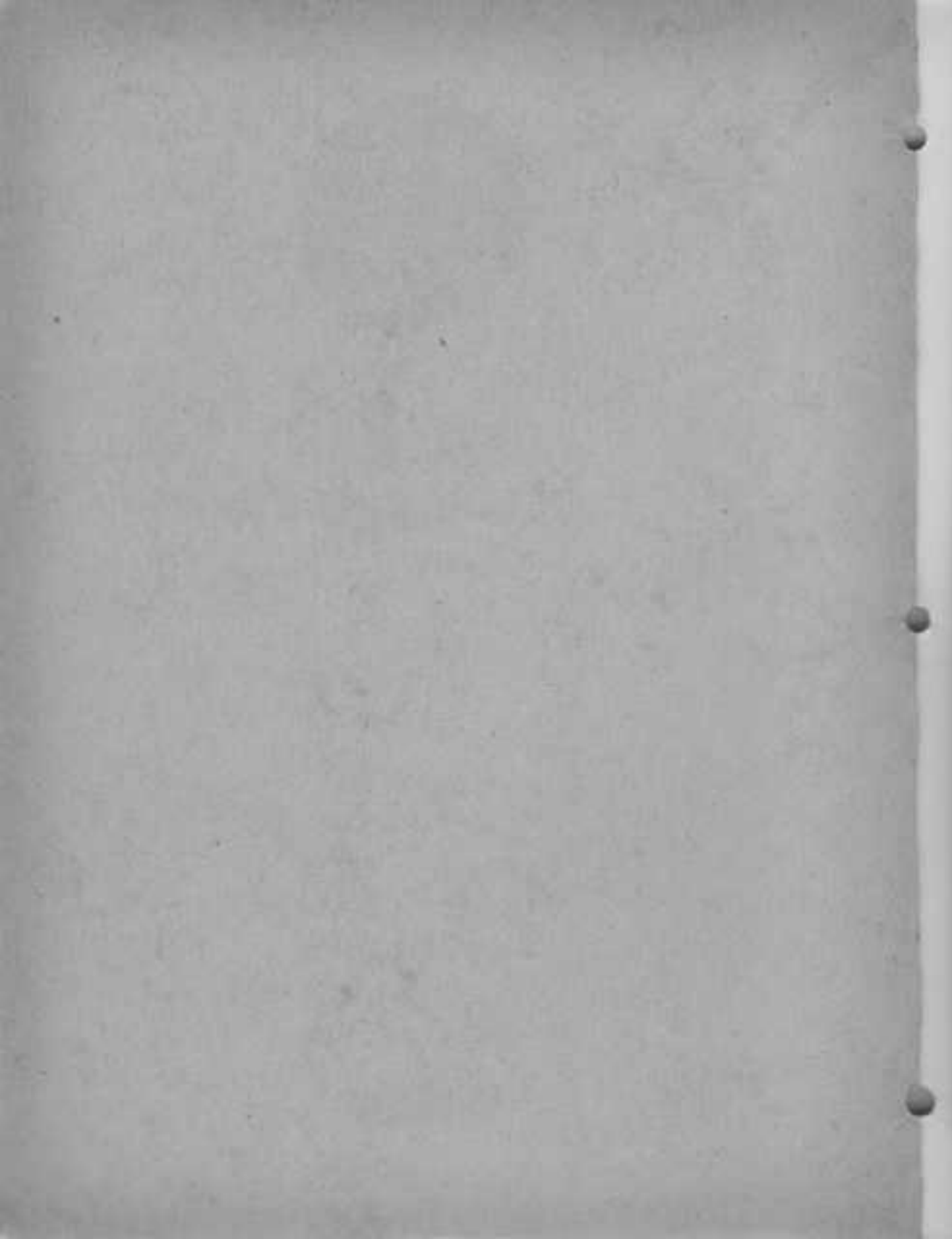


GUN, MACHINE, BREN, .303-in., Mk.I and Mk.II MOUNTING, TRIPOD, BREN, .303-in., M.G., Mk.I

*Prepared by the Staff of
the Master-General of the
Ordnance and issued under*

1945

*the direction of the Com-
mander-in-Chief, Headquarters
Australian Military Forces.*



Restricted

THE INFORMATION GIVEN IN
THIS DOCUMENT IS NOT TO
BE COMMUNICATED, EITHER
DIRECTLY OR INDIRECTLY, TO
ANY PERSON NOT AUTHORIZED TO
RECEIVE IT



AUSTRALIAN MILITARY FORCES

Identification List



**GUN, MACHINE,
BREN, .303-in.,
Mk.I and Mk.II
MOUNTING, TRIPOD, BREN,
.303-in., M.G., Mk.I**

*Prepared by the Staff of
the Master-General of the
Ordnance and issued under*

1945

*the direction of the Com-
mander-in-Chief, Headquarters
Australian Military Forces.*

| |
|-----------------|
| <i>Contents</i> |
|-----------------|

| | PAGE |
|--|---------|
| GUN, MACHINE, BRN, .505-in., M.I. | 6 - 12 |
| GUN, MACHINE, BRN, .505-in., M.II | 13 - 20 |
| ACCESSORIES, BRN, .505-in., K.O. | 21 - 25 |
| MOUNTING, TRIPOD, BRN, .505-in., M.G., M.I. | 26 - 28 |
| NUMERICAL INDEX | 30 - 31 |

Preface

These lists are prepared for the purpose of enabling those called upon to deal with the equipments in the Service to identify any component part or assembly of parts and to ascertain the current service designation, so as to secure the correct preparation of vouchers, facilitate accounting and reduce correspondence.

Each item is identified by a part number and designation (i.e. the noun, and any other words on the same line) and they must always be quoted.

The Catalogue No. consists of a block of figures with a prefix of letters which denotes the vocabulary section under which the parts are provided, held and issued, eg.

FACE - Section G1

G1/23 - Inventory - FACE - Section G1

The plates illustrate the component parts and carry a reference number to the text on the opposite page where the designation is shown. The plate and its text opposite are complete in themselves and contain all that is necessary to know in connection with the articles. If the designation be known, a reference to the text will lead, by the number in column 1, to the plate opposite where the general appearance of the article is seen. If the part is available, then a comparison with the plate will locate its number, and by cross reference to the text, the designation becomes known.

To assist in the location of parts, certain equipments have been divided so that they may be listed by groups of conveniently associated items capable of being dealt with on one page of the text.

Instructions

WHEN SUBMITTING INDENTS AND DEMANDS

1. Separate indents will be prepared for stores held in different sections or sub-sections of the vocabulary, and not more than seven (7) items will be shown on any one sheet.

2. ALL INDENTS MUST SHOW :-

- (a) The vocabulary section under which the items are held.
- (b) The designation.
- (c) The part number.
- (d) The quantity of the item required.

3. (a) When indenting for equipment parts, reference will be made to the index of contents for the vocabulary section and designation of the general assembly for which the parts are required, and these particulars will be quoted at the head of the indent. This will be followed by the designation which will consist of the noun and any other words on the same line, e.g. -

| Designation Section C1 | Catalogue No. | No. Required |
|-------------------------------------|------------------|-----------------|
| WIN, MACHINE, BUSH, .301-in., SK.1. | | |
| BOUNCE, foresight, SK.1. | SK 2400 | 1 |

- ➡ If the part is not available, the full nomenclature will be shown.
- (b) For miscellaneous stores, quote the appropriate vocabulary section at the head of the indent, then show designation, part number and quantity of the item required.
 - (c) Items marked with an asterisk in the text are available for Workshop replacement and will be demanded through normal channels by A.K.M.V. personnel.
4. When demands are submitted by signal or telephone, the noun only, the part number and quantity of the item required will be quoted.
5. Amendments to the lists, when necessary will be notified in R.O's. It is essential that the lists should be carefully amended, and the date of each amendment shown in the space provided on the following page :-

The lists have been amended up to

| | | | |
|--|--|--|--|
| | | | |
| | | | |
| | | | |

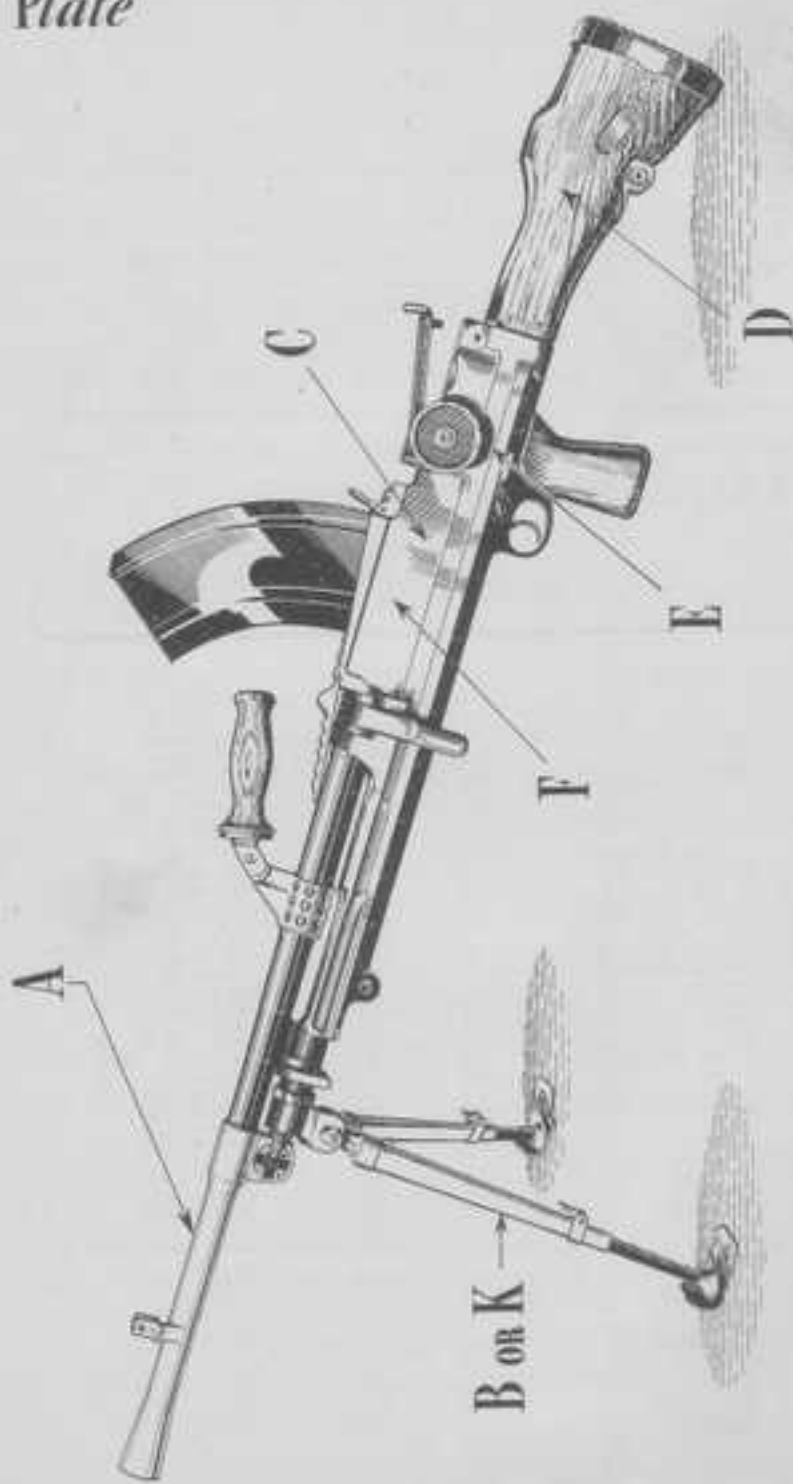
- Reports regarding errors or omissions should be addressed to the Director of Amendment, I.R.S., Melbourne.

Abbreviations

STANDARD ABBREVIATIONS FOR USE IN IDENTIFICATION LISTS

| | | | |
|------------|----------------------------|----------|---------------------|
| A. | Assembly | M.M. | Not Pressed |
| A.A. | Anti-Aircraft | N.Z. | Hard Rolled |
| Al. | Aluminium | O.T.O. | Heat Treated Steel |
| A.F. | Arms-and-Ammunition | I.H.A. | Instrument Head |
| Ash. | Asbestos | in. or " | Inches |
| Asst. | Australian Pattern | Inst. | Instrument |
| B. | Brass | L. | Leather |
| B.A. | British Association | L.H. | Left Hand |
| Bel. | Bellite | M.A. | Min Assembly |
| Br. | Brass | M.S. | Manganese Bronze |
| B.F.St. | Bullet Proof Steel | M.S.I. | Malleable Cast Iron |
| Br. | Brass | N. | Nick |
| Brcl. | Brillium | NL. | Nylonite |
| B.S.F. | British Standard Pipe | N.S. | Nickel Steel |
| B.S.W. | British Standard Whitworth | P. | Plate |
| C. | Copper | R. | Rubber |
| Carb. | Carbon | R.S.I. | Nickel Silver |
| C.F.P. | Cotton Filled Plastic | Sy. | Synthetic |
| Ch. | Chrome | P. | Paper |
| Ch.St. | Chrome Steel | P.S. | Phosphor Bronze |
| Ch.Hd. | Chrome Head | Pt. | Plate |
| C.I. | Cast Iron | P.M. | Plastic Moulding |
| Ch. | Case | Prec. | Precision |
| Contd. | Continued | Pr. | Primer |
| C.St. | Cast Steel | Q.F. | Quick Firing |
| Csk. | Counterwork | R. | Rubber |
| Cvs. | Canvas | R.B. | Rolled Bronze |
| D.C. | Die Cast | Rd. | Road |
| Dfx. | DuraFlex | S.A. | Sub. Assembly |
| Dis. or S. | Diameter | S. | Screw |
| Dur. | Duralium | Sh. | Sheet |
| F. | Felt | Sl. | Silicon |
| Fl. | Fibre | sl. | Silver |
| Fl.Hd. | Pilot Head | Slk. | Silicrone |
| Fl. | Foot or Feet | S.K.O. | Sub Machine Gun |
| G.A. | General Arrangement | S.O. | Spring Steel |
| Galv. | Galvanized | St.St. | Stainless Steel |
| Gl. | Glass | S.T. | Single Turn |
| G.M. | Gun Metal | St. | Steel |
| Hd. | Head | S.K.O. | Standard Fire Gauge |
| Hk. | Hexagonal | Thm. | Thermium |
| Hid. | Hydrazine | W.M. | White Metal |

Key Plate



GUN MACHINE BREN .303 in. MK.I

Index to Key Plate

| <u>PLATE</u> | | <u>PAGING PAGE</u> |
|--------------|---------------------------------------|--------------------|
| Key | 673, MACHINES, 2828, 3/20-4in., KE.I. | ... |
| A | BARREL GROUP, KE.I.* ... | ... 6 |
| B | DIPOD, KE.I. (SEE 941B) ... | ... 7 |
| C | BOOT GROUP, KE.I. ... | ... 8 |
| D | BUTT GROUP, KE.I. (BUTTY 2828) ... | ... 9 |
| E | BUTT GROUP, KE.I. (SLIDE 2828) ... | ... 10 |
| F | PISTON & BUSHES BLOCK GROUP ... | ... 11 |
| K | DIPOD, KE.I. (CAA 1087) ... | ... 12 |
| | | ... 16 |

Plate A

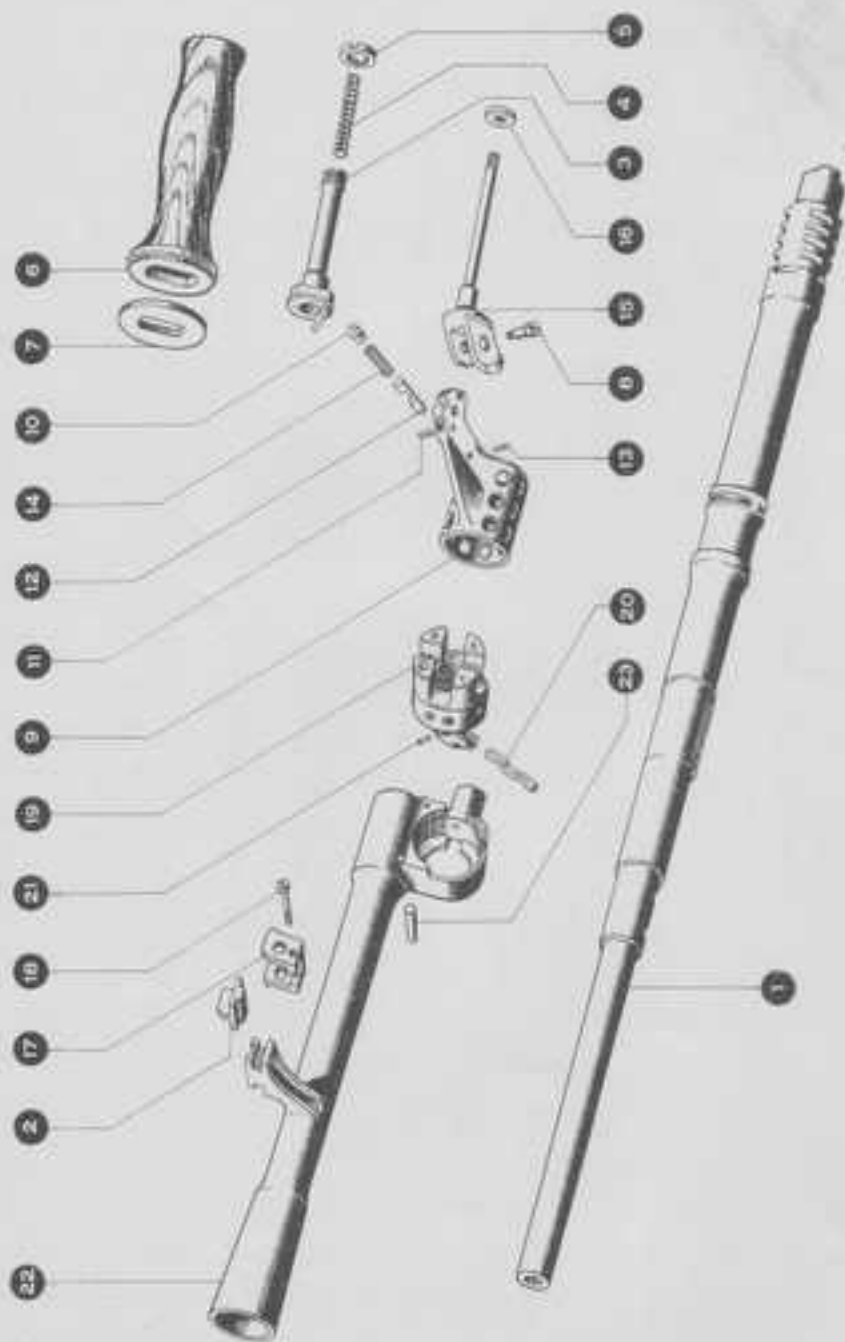
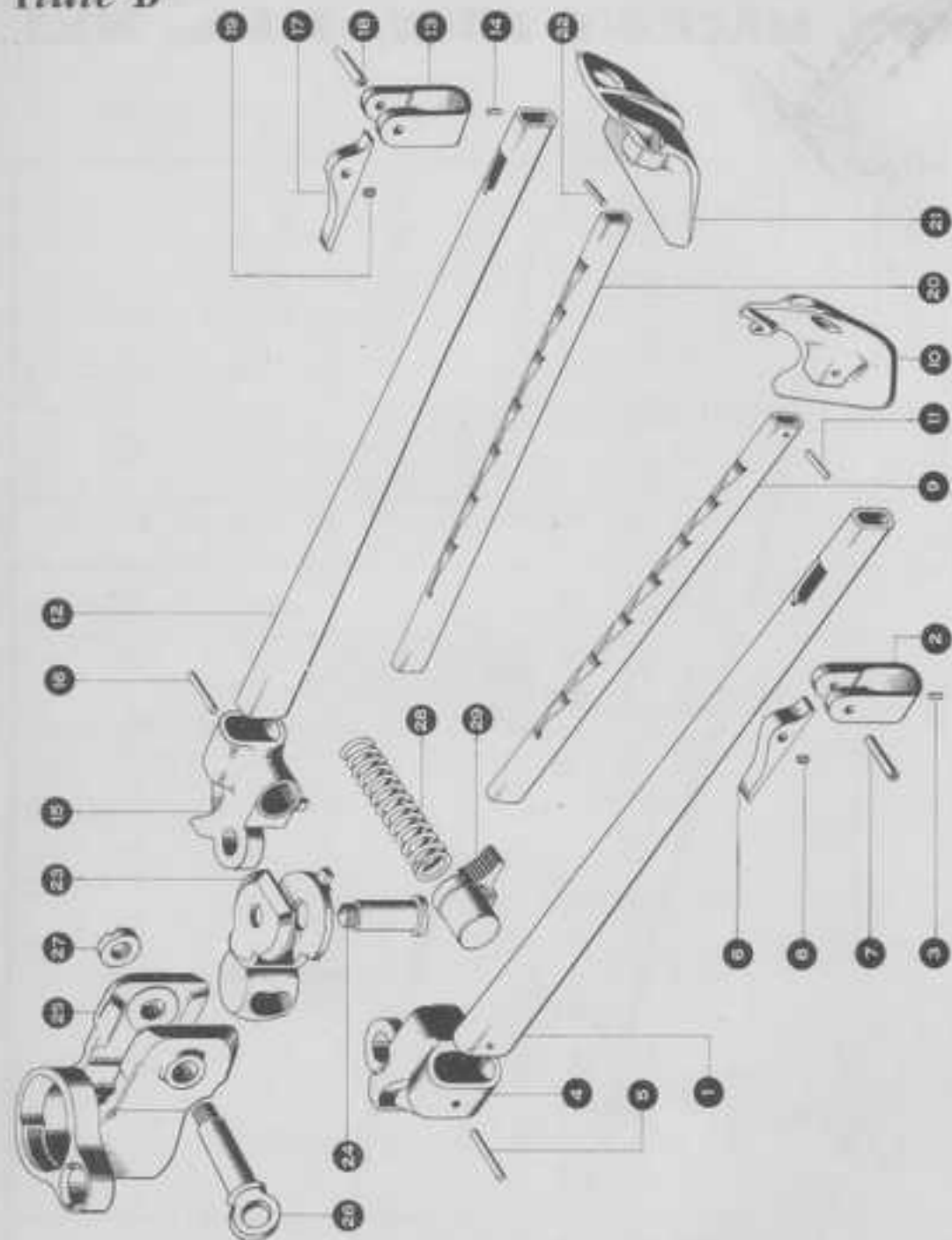


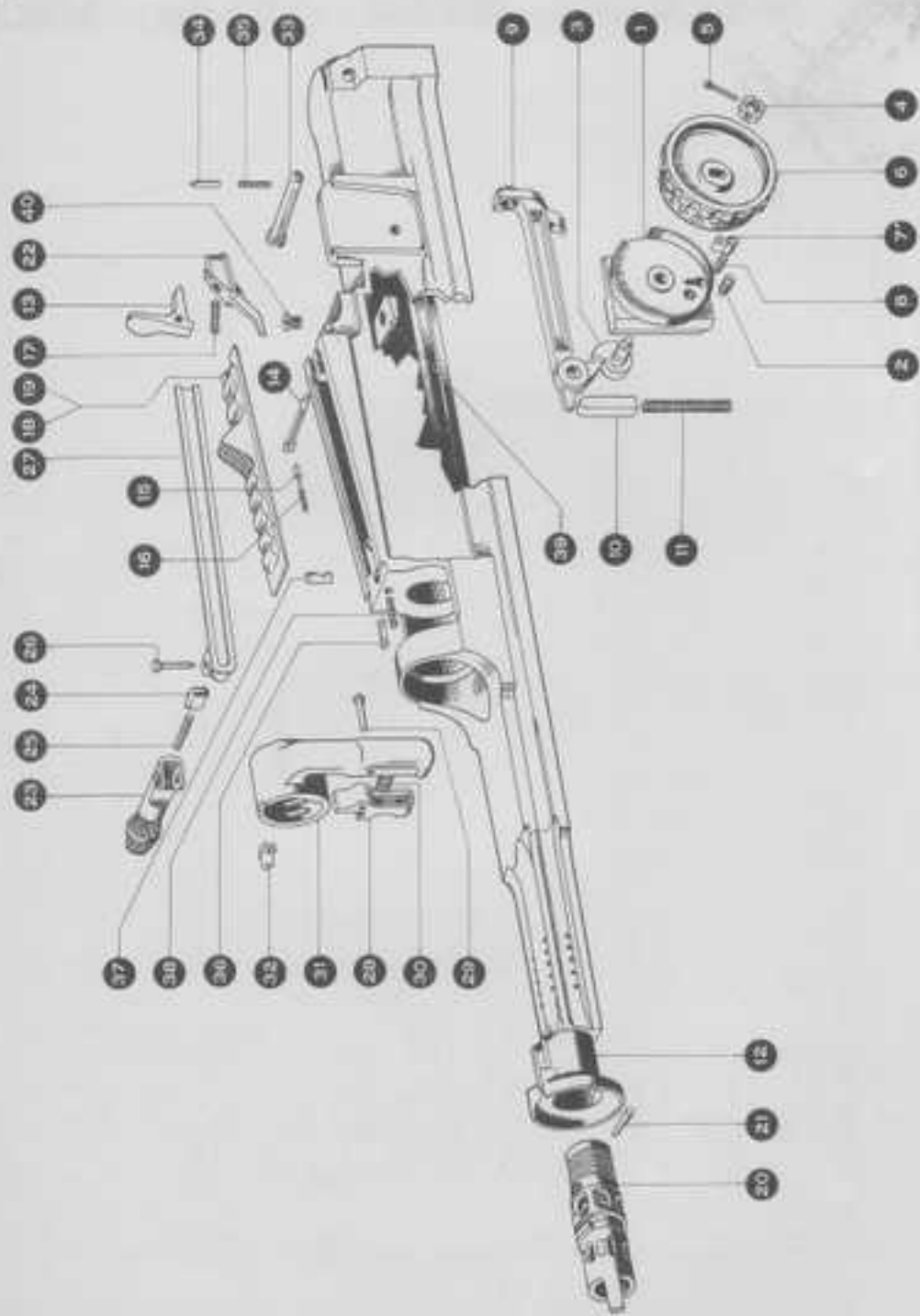
Plate B



GUN, MACHINE, BREN, .303-in., Mk.I

| FIG. NO. | DESCRIPTION | QUANTITY | WASH MARKS | MT. | NO. OF P. | STARTING POINTS | REMARKS |
|----------|----------------------------------|-------------|------------|------|-----------|-----------------|--|
| 1 | GM. MACHINE GUN, .303-in., Mk.I. | (continued) | 92.0 A | M.T. | 1 | M.S.A. 1476 | 7 Assembly interchangeable with Gun, Machine, Bren, .303-in., Mk.I. |
| 2 | Barrel, Mk. I | 1 | 94.5 A | M.T. | 1 | M.S.A. 1477 | 8 Components interchangeable with Gun, Machine, Bren, .303-in., Mk.I (Catalog 1007 - Page 6) |
| 3 | Washer, outer | 1 | | M.T. | 1 | M.S.A. 1478 | |
| 4 | Washer, inner | 1 | | M.T. | 1 | M.S.A. 1479 | |
| 5 | Washer, outer, 1/2" dia. | 1 | | M.T. | 1 | M.S.A. 1480 | |
| 6 | Washer, inner, 1/2" dia. | 1 | | M.T. | 1 | M.S.A. 1481 | |
| 7 | Washer, 1/2" dia. | 1 | | M.T. | 1 | M.S.A. 1482 | |
| 8 | Washer, 1/2" dia. | 1 | | M.T. | 1 | M.S.A. 1483 | |
| 9 | Washer, 1/2" dia. | 1 | | M.T. | 1 | M.S.A. 1484 | |
| 10 | Washer, 1/2" dia. | 1 | | M.T. | 1 | M.S.A. 1485 | |
| 11 | Washer, 1/2" dia. | 1 | | M.T. | 1 | M.S.A. 1486 | |
| 12 | Washer, 1/2" dia. | 1 | | M.T. | 1 | M.S.A. 1487 | |
| 13 | Washer, 1/2" dia. | 1 | | M.T. | 1 | M.S.A. 1488 | |
| 14 | Washer, 1/2" dia. | 1 | | M.T. | 1 | M.S.A. 1489 | |
| 15 | Washer, 1/2" dia. | 1 | | M.T. | 1 | M.S.A. 1490 | |
| 16 | Washer, 1/2" dia. | 1 | | M.T. | 1 | M.S.A. 1491 | |
| 17 | Washer, 1/2" dia. | 1 | | M.T. | 1 | M.S.A. 1492 | |
| 18 | Washer, 1/2" dia. | 1 | | M.T. | 1 | M.S.A. 1493 | |
| 19 | Washer, 1/2" dia. | 1 | | M.T. | 1 | M.S.A. 1494 | |
| 20 | Washer, 1/2" dia. | 1 | | M.T. | 1 | M.S.A. 1495 | |
| 21 | Washer, 1/2" dia. | 1 | | M.T. | 1 | M.S.A. 1496 | |
| 22 | Washer, 1/2" dia. | 1 | | M.T. | 1 | M.S.A. 1497 | |
| 23 | Washer, 1/2" dia. | 1 | | M.T. | 1 | M.S.A. 1498 | |
| 24 | Washer, 1/2" dia. | 1 | | M.T. | 1 | M.S.A. 1499 | |
| 25 | Washer, 1/2" dia. | 1 | | M.T. | 1 | M.S.A. 1500 | |
| 26 | Washer, 1/2" dia. | 1 | | M.T. | 1 | M.S.A. 1501 | |
| 27 | Washer, 1/2" dia. | 1 | | M.T. | 1 | M.S.A. 1502 | |
| 28 | Washer, 1/2" dia. | 1 | | M.T. | 1 | M.S.A. 1503 | |
| 29 | Washer, 1/2" dia. | 1 | | M.T. | 1 | M.S.A. 1504 | |
| 30 | Washer, 1/2" dia. | 1 | | M.T. | 1 | M.S.A. 1505 | |
| 31 | Washer, 1/2" dia. | 1 | | M.T. | 1 | M.S.A. 1506 | |
| 32 | Washer, 1/2" dia. | 1 | | M.T. | 1 | M.S.A. 1507 | |
| 33 | Washer, 1/2" dia. | 1 | | M.T. | 1 | M.S.A. 1508 | |
| 34 | Washer, 1/2" dia. | 1 | | M.T. | 1 | M.S.A. 1509 | |
| 35 | Washer, 1/2" dia. | 1 | | M.T. | 1 | M.S.A. 1510 | |
| 36 | Washer, 1/2" dia. | 1 | | M.T. | 1 | M.S.A. 1511 | |
| 37 | Washer, 1/2" dia. | 1 | | M.T. | 1 | M.S.A. 1512 | |
| 38 | Washer, 1/2" dia. | 1 | | M.T. | 1 | M.S.A. 1513 | |
| 39 | Washer, 1/2" dia. | 1 | | M.T. | 1 | M.S.A. 1514 | |
| 40 | Washer, 1/2" dia. | 1 | | M.T. | 1 | M.S.A. 1515 | |
| 41 | Washer, 1/2" dia. | 1 | | M.T. | 1 | M.S.A. 1516 | |
| 42 | Washer, 1/2" dia. | 1 | | M.T. | 1 | M.S.A. 1517 | |
| 43 | Washer, 1/2" dia. | 1 | | M.T. | 1 | M.S.A. 1518 | |
| 44 | Washer, 1/2" dia. | 1 | | M.T. | 1 | M.S.A. 1519 | |
| 45 | Washer, 1/2" dia. | 1 | | M.T. | 1 | M.S.A. 1520 | |
| 46 | Washer, 1/2" dia. | 1 | | M.T. | 1 | M.S.A. 1521 | |
| 47 | Washer, 1/2" dia. | 1 | | M.T. | 1 | M.S.A. 1522 | |
| 48 | Washer, 1/2" dia. | 1 | | M.T. | 1 | M.S.A. 1523 | |
| 49 | Washer, 1/2" dia. | 1 | | M.T. | 1 | M.S.A. 1524 | |
| 50 | Washer, 1/2" dia. | 1 | | M.T. | 1 | M.S.A. 1525 | |
| 51 | Washer, 1/2" dia. | 1 | | M.T. | 1 | M.S.A. 1526 | |
| 52 | Washer, 1/2" dia. | 1 | | M.T. | 1 | M.S.A. 1527 | |
| 53 | Washer, 1/2" dia. | 1 | | M.T. | 1 | M.S.A. 1528 | |
| 54 | Washer, 1/2" dia. | 1 | | M.T. | 1 | M.S.A. 1529 | |
| 55 | Washer, 1/2" dia. | 1 | | M.T. | 1 | M.S.A. 1530 | |
| 56 | Washer, 1/2" dia. | 1 | | M.T. | 1 | M.S.A. 1531 | |
| 57 | Washer, 1/2" dia. | 1 | | M.T. | 1 | M.S.A. 1532 | |
| 58 | Washer, 1/2" dia. | 1 | | M.T. | 1 | M.S.A. 1533 | |
| 59 | Washer, 1/2" dia. | 1 | | M.T. | 1 | M.S.A. 1534 | |
| 60 | Washer, 1/2" dia. | 1 | | M.T. | 1 | M.S.A. 1535 | |
| 61 | Washer, 1/2" dia. | 1 | | M.T. | 1 | M.S.A. 1536 | |
| 62 | Washer, 1/2" dia. | 1 | | M.T. | 1 | M.S.A. 1537 | |
| 63 | Washer, 1/2" dia. | 1 | | M.T. | 1 | M.S.A. 1538 | |
| 64 | Washer, 1/2" dia. | 1 | | M.T. | 1 | M.S.A. 1539 | |
| 65 | Washer, 1/2" dia. | 1 | | M.T. | 1 | M.S.A. 1540 | |
| 66 | Washer, 1/2" dia. | 1 | | M.T. | 1 | M.S.A. 1541 | |
| 67 | Washer, 1/2" dia. | 1 | | M.T. | 1 | M.S.A. 1542 | |
| 68 | Washer, 1/2" dia. | 1 | | M.T. | 1 | M.S.A. 1543 | |
| 69 | Washer, 1/2" dia. | 1 | | M.T. | 1 | M.S.A. 1544 | |
| 70 | Washer, 1/2" dia. | 1 | | M.T. | 1 | M.S.A. 1545 | |
| 71 | Washer, 1/2" dia. | 1 | | M.T. | 1 | M.S.A. 1546 | |
| 72 | Washer, 1/2" dia. | 1 | | M.T. | 1 | M.S.A. 1547 | |
| 73 | Washer, 1/2" dia. | 1 | | M.T. | 1 | M.S.A. 1548 | |
| 74 | Washer, 1/2" dia. | 1 | | M.T. | 1 | M.S.A. 1549 | |
| 75 | Washer, 1/2" dia. | 1 | | M.T. | 1 | M.S.A. 1550 | |
| 76 | Washer, 1/2" dia. | 1 | | M.T. | 1 | M.S.A. 1551 | |
| 77 | Washer, 1/2" dia. | 1 | | M.T. | 1 | M.S.A. 1552 | |
| 78 | Washer, 1/2" dia. | 1 | | M.T. | 1 | M.S.A. 1553 | |
| 79 | Washer, 1/2" dia. | 1 | | M.T. | 1 | M.S.A. 1554 | |
| 80 | Washer, 1/2" dia. | 1 | | M.T. | 1 | M.S.A. 1555 | |
| 81 | Washer, 1/2" dia. | 1 | | M.T. | 1 | M.S.A. 1556 | |
| 82 | Washer, 1/2" dia. | 1 | | M.T. | 1 | M.S.A. 1557 | |
| 83 | Washer, 1/2" dia. | 1 | | M.T. | 1 | M.S.A. 1558 | |
| 84 | Washer, 1/2" dia. | 1 | | M.T. | 1 | M.S.A. 1559 | |
| 85 | Washer, 1/2" dia. | 1 | | M.T. | 1 | M.S.A. 1560 | |
| 86 | Washer, 1/2" dia. | 1 | | M.T. | 1 | M.S.A. 1561 | |
| 87 | Washer, 1/2" dia. | 1 | | M.T. | 1 | M.S.A. 1562 | |
| 88 | Washer, 1/2" dia. | 1 | | M.T. | 1 | M.S.A. 1563 | |
| 89 | Washer, 1/2" dia. | 1 | | M.T. | 1 | M.S.A. 1564 | |
| 90 | Washer, 1/2" dia. | 1 | | M.T. | 1 | M.S.A. 1565 | |
| 91 | Washer, 1/2" dia. | 1 | | M.T. | 1 | M.S.A. 1566 | |
| 92 | Washer, 1/2" dia. | 1 | | M.T. | 1 | M.S.A. 1567 | |
| 93 | Washer, 1/2" dia. | 1 | | M.T. | 1 | M.S.A. 1568 | |
| 94 | Washer, 1/2" dia. | 1 | | M.T. | 1 | M.S.A. 1569 | |
| 95 | Washer, 1/2" dia. | 1 | | M.T. | 1 | M.S.A. 1570 | |
| 96 | Washer, 1/2" dia. | 1 | | M.T. | 1 | M.S.A. 1571 | |
| 97 | Washer, 1/2" dia. | 1 | | M.T. | 1 | M.S.A. 1572 | |
| 98 | Washer, 1/2" dia. | 1 | | M.T. | 1 | M.S.A. 1573 | |
| 99 | Washer, 1/2" dia. | 1 | | M.T. | 1 | M.S.A. 1574 | |
| 100 | Washer, 1/2" dia. | 1 | | M.T. | 1 | M.S.A. 1575 | |

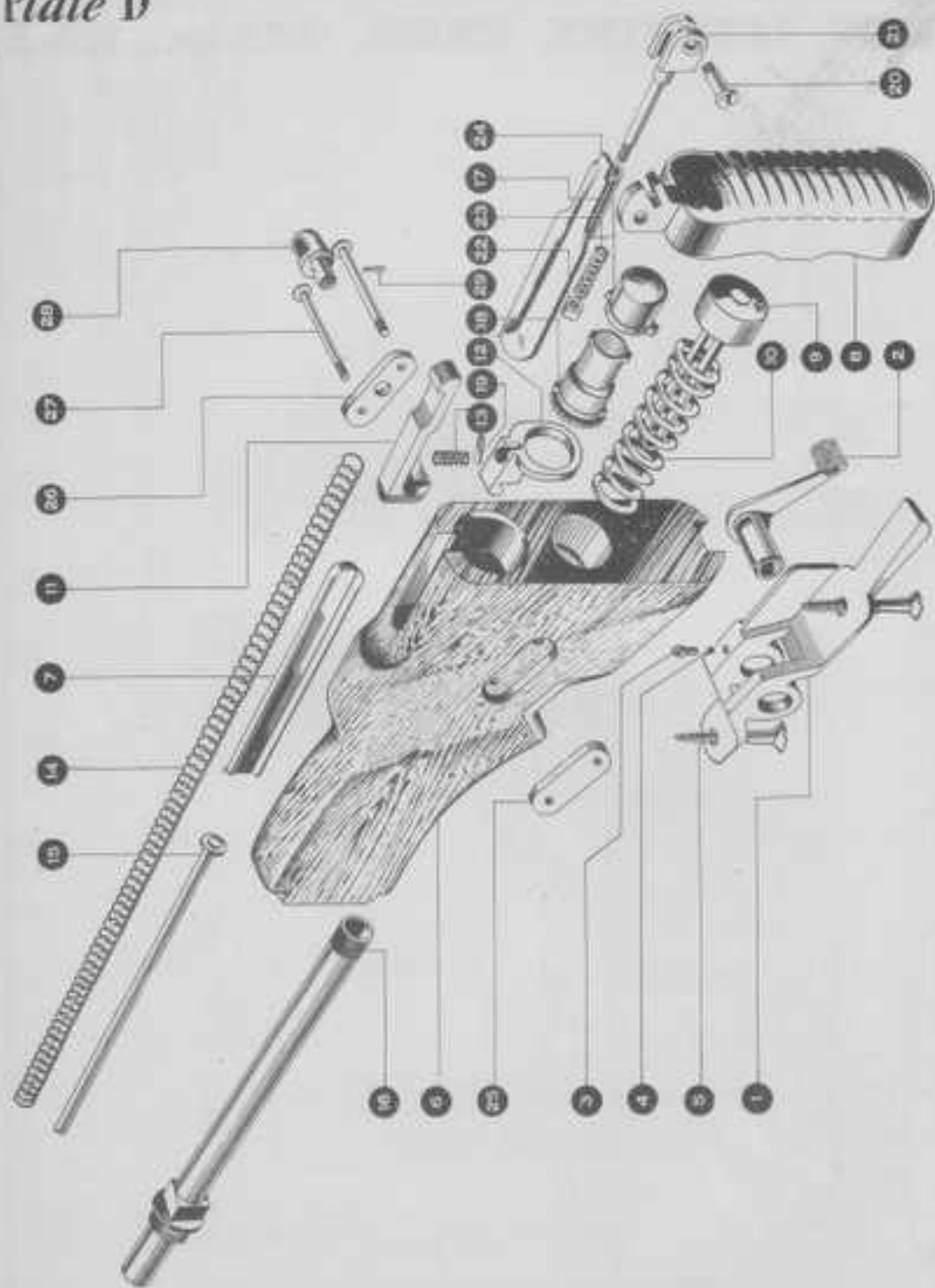
Plate C



GUN, MACHINE, BREN, .303-in., Mk.I

| REF. NO. | DESCRIPTION | QUANTITY | UNIT | NO. OF | STARTED | ISSUES |
|----------|--------------------------------------|----------|------|--------|--------------|---|
| 1 | INT. MOUNTING, REAR, .303-in., Mk.I. | 1 | EA | 1 | 8-2-44, 1420 | 2 Interchangeable with front mounting, Brens, .303-in., Mk.I. |
| 2 | INT. MOUNTING, REAR, .303-in., Mk.I. | 1 | EA | 1 | 1425 | |
| 3 | INT. MOUNTING, REAR, .303-in., Mk.I. | 1 | EA | 1 | 1425 | |
| 4 | INT. MOUNTING, REAR, .303-in., Mk.I. | 1 | EA | 1 | 1425 | |
| 5 | INT. MOUNTING, REAR, .303-in., Mk.I. | 1 | EA | 1 | 1425 | |
| 6 | INT. MOUNTING, REAR, .303-in., Mk.I. | 1 | EA | 1 | 1425 | |
| 7 | INT. MOUNTING, REAR, .303-in., Mk.I. | 1 | EA | 1 | 1425 | |
| 8 | INT. MOUNTING, REAR, .303-in., Mk.I. | 1 | EA | 1 | 1425 | |
| 9 | INT. MOUNTING, REAR, .303-in., Mk.I. | 1 | EA | 1 | 1425 | |
| 10 | INT. MOUNTING, REAR, .303-in., Mk.I. | 1 | EA | 1 | 1425 | |
| 11 | INT. MOUNTING, REAR, .303-in., Mk.I. | 1 | EA | 1 | 1425 | |
| 12 | INT. MOUNTING, REAR, .303-in., Mk.I. | 1 | EA | 1 | 1425 | |
| 13 | INT. MOUNTING, REAR, .303-in., Mk.I. | 1 | EA | 1 | 1425 | |
| 14 | INT. MOUNTING, REAR, .303-in., Mk.I. | 1 | EA | 1 | 1425 | |
| 15 | INT. MOUNTING, REAR, .303-in., Mk.I. | 1 | EA | 1 | 1425 | |
| 16 | INT. MOUNTING, REAR, .303-in., Mk.I. | 1 | EA | 1 | 1425 | |
| 17 | INT. MOUNTING, REAR, .303-in., Mk.I. | 1 | EA | 1 | 1425 | |
| 18 | INT. MOUNTING, REAR, .303-in., Mk.I. | 1 | EA | 1 | 1425 | |
| 19 | INT. MOUNTING, REAR, .303-in., Mk.I. | 1 | EA | 1 | 1425 | |
| 20 | INT. MOUNTING, REAR, .303-in., Mk.I. | 1 | EA | 1 | 1425 | |
| 21 | INT. MOUNTING, REAR, .303-in., Mk.I. | 1 | EA | 1 | 1425 | |
| 22 | INT. MOUNTING, REAR, .303-in., Mk.I. | 1 | EA | 1 | 1425 | |
| 23 | INT. MOUNTING, REAR, .303-in., Mk.I. | 1 | EA | 1 | 1425 | |
| 24 | INT. MOUNTING, REAR, .303-in., Mk.I. | 1 | EA | 1 | 1425 | |
| 25 | INT. MOUNTING, REAR, .303-in., Mk.I. | 1 | EA | 1 | 1425 | |
| 26 | INT. MOUNTING, REAR, .303-in., Mk.I. | 1 | EA | 1 | 1425 | |
| 27 | INT. MOUNTING, REAR, .303-in., Mk.I. | 1 | EA | 1 | 1425 | |
| 28 | INT. MOUNTING, REAR, .303-in., Mk.I. | 1 | EA | 1 | 1425 | |
| 29 | INT. MOUNTING, REAR, .303-in., Mk.I. | 1 | EA | 1 | 1425 | |
| 30 | INT. MOUNTING, REAR, .303-in., Mk.I. | 1 | EA | 1 | 1425 | |
| 31 | INT. MOUNTING, REAR, .303-in., Mk.I. | 1 | EA | 1 | 1425 | |
| 32 | INT. MOUNTING, REAR, .303-in., Mk.I. | 1 | EA | 1 | 1425 | |
| 33 | INT. MOUNTING, REAR, .303-in., Mk.I. | 1 | EA | 1 | 1425 | |
| 34 | INT. MOUNTING, REAR, .303-in., Mk.I. | 1 | EA | 1 | 1425 | |
| 35 | INT. MOUNTING, REAR, .303-in., Mk.I. | 1 | EA | 1 | 1425 | |
| 36 | INT. MOUNTING, REAR, .303-in., Mk.I. | 1 | EA | 1 | 1425 | |
| 37 | INT. MOUNTING, REAR, .303-in., Mk.I. | 1 | EA | 1 | 1425 | |
| 38 | INT. MOUNTING, REAR, .303-in., Mk.I. | 1 | EA | 1 | 1425 | |
| 39 | INT. MOUNTING, REAR, .303-in., Mk.I. | 1 | EA | 1 | 1425 | |
| 40 | INT. MOUNTING, REAR, .303-in., Mk.I. | 1 | EA | 1 | 1425 | |

Plate D



10 GUN, MACHINE, BREN, .303-in., Mk.I

| REF. NO. | DESCRIPTION | QUAN. REQD. | MAT. GRP. | PLANTING NUMBER | ISSUES |
|----------|--|-------------|-----------|-----------------|--|
| 1 | REV. BUSHING, BRN, .303-in., Mk.I. (cont'd.) | 20 | B.T.D. | M.I.L.D. 1000 | To be assembled as 1. Bypassing M.V. Balls, anti-friction, 1/8". |
| 2 | REV. GRIP, BRN, Mk.I. | 1 | B.T.D. | 1251 | |
| 3 | BRACKET, bolt, Mk.I. | 1 | B.T.D. | 1252 | To be assembled as 1. Bypassing M.V. Balls, anti-friction, 1/8". |
| 4 | PIV. mounting, (cont'd.) | 1 | B.T.D. | 1253 | |
| 5 | OSER, retaining, Mk.II, ball, mounting pin, 1/8" | 1 | B. | 1254 | To be assembled as 1. Bypassing M.V. Balls, anti-friction, 1/8". |
| 6 | OSER, wood, rd. hd., No. 11 | 1 | B. | 1255 | |
| 7 | REV. M.I. (1) round complete with | 1 | B.T.D. | 1256 | To be assembled as 1. Bypassing M.V. Balls, anti-friction, 1/8". |
| 8 | OSER, 4140, coating handle | 1 | B.T.D. | 1257 | |
| 9 | PLATE, bolt, Mk.I. | 1 | B. | 1258 | To be assembled as 1. Bypassing M.V. Balls, anti-friction, 1/8". |
| 10 | SPRING | 1 | B. | 1259 | |
| 11 | OSER, 4140 | 1 | B.T.D. | 1260 | To be assembled as 1. Bypassing M.V. Balls, anti-friction, 1/8". |
| 12 | OSER, retaining, Mk.II, ball, mounting pin, 1/8" | 1 | B. | 1261 | |
| 13 | OSER, wood, rd. hd., No. 11 | 1 | B. | 1262 | To be assembled as 1. Bypassing M.V. Balls, anti-friction, 1/8". |
| 14 | REV. M.I. (1) round complete with | 1 | B.T.D. | 1263 | |
| 15 | OSER, 4140, coating handle | 1 | B.T.D. | 1264 | To be assembled as 1. Bypassing M.V. Balls, anti-friction, 1/8". |
| 16 | PLATE, bolt, Mk.I. | 1 | B. | 1265 | |
| 17 | SPRING | 1 | B. | 1266 | To be assembled as 1. Bypassing M.V. Balls, anti-friction, 1/8". |
| 18 | OSER, 4140 | 1 | B.T.D. | 1267 | |
| 19 | OSER, retaining, Mk.II, ball, mounting pin, 1/8" | 1 | B. | 1268 | To be assembled as 1. Bypassing M.V. Balls, anti-friction, 1/8". |
| 20 | OSER, wood, rd. hd., No. 11 | 1 | B. | 1269 | |
| 21 | REV. M.I. (1) round complete with | 1 | B.T.D. | 1270 | To be assembled as 1. Bypassing M.V. Balls, anti-friction, 1/8". |
| 22 | OSER, 4140, coating handle | 1 | B.T.D. | 1271 | |
| 23 | PLATE, bolt, Mk.I. | 1 | B. | 1272 | To be assembled as 1. Bypassing M.V. Balls, anti-friction, 1/8". |
| 24 | SPRING | 1 | B. | 1273 | |
| 25 | OSER, 4140 | 1 | B.T.D. | 1274 | To be assembled as 1. Bypassing M.V. Balls, anti-friction, 1/8". |
| 26 | OSER, retaining, Mk.II, ball, mounting pin, 1/8" | 1 | B. | 1275 | |
| 27 | OSER, wood, rd. hd., No. 11 | 1 | B. | 1276 | To be assembled as 1. Bypassing M.V. Balls, anti-friction, 1/8". |
| 28 | REV. M.I. (1) round complete with | 1 | B.T.D. | 1277 | |
| 29 | OSER, 4140, coating handle | 1 | B.T.D. | 1278 | To be assembled as 1. Bypassing M.V. Balls, anti-friction, 1/8". |
| 30 | PLATE, bolt, Mk.I. | 1 | B. | 1279 | |
| 31 | SPRING | 1 | B. | 1280 | To be assembled as 1. Bypassing M.V. Balls, anti-friction, 1/8". |
| 32 | OSER, 4140 | 1 | B.T.D. | 1281 | |
| 33 | OSER, retaining, Mk.II, ball, mounting pin, 1/8" | 1 | B. | 1282 | To be assembled as 1. Bypassing M.V. Balls, anti-friction, 1/8". |
| 34 | OSER, wood, rd. hd., No. 11 | 1 | B. | 1283 | |
| 35 | REV. M.I. (1) round complete with | 1 | B.T.D. | 1284 | To be assembled as 1. Bypassing M.V. Balls, anti-friction, 1/8". |
| 36 | OSER, 4140, coating handle | 1 | B.T.D. | 1285 | |
| 37 | PLATE, bolt, Mk.I. | 1 | B. | 1286 | To be assembled as 1. Bypassing M.V. Balls, anti-friction, 1/8". |
| 38 | SPRING | 1 | B. | 1287 | |
| 39 | OSER, 4140 | 1 | B.T.D. | 1288 | To be assembled as 1. Bypassing M.V. Balls, anti-friction, 1/8". |
| 40 | OSER, retaining, Mk.II, ball, mounting pin, 1/8" | 1 | B. | 1289 | |
| 41 | OSER, wood, rd. hd., No. 11 | 1 | B. | 1290 | To be assembled as 1. Bypassing M.V. Balls, anti-friction, 1/8". |
| 42 | REV. M.I. (1) round complete with | 1 | B.T.D. | 1291 | |
| 43 | OSER, 4140, coating handle | 1 | B.T.D. | 1292 | To be assembled as 1. Bypassing M.V. Balls, anti-friction, 1/8". |
| 44 | PLATE, bolt, Mk.I. | 1 | B. | 1293 | |
| 45 | SPRING | 1 | B. | 1294 | To be assembled as 1. Bypassing M.V. Balls, anti-friction, 1/8". |
| 46 | OSER, 4140 | 1 | B.T.D. | 1295 | |
| 47 | OSER, retaining, Mk.II, ball, mounting pin, 1/8" | 1 | B. | 1296 | To be assembled as 1. Bypassing M.V. Balls, anti-friction, 1/8". |
| 48 | OSER, wood, rd. hd., No. 11 | 1 | B. | 1297 | |
| 49 | REV. M.I. (1) round complete with | 1 | B.T.D. | 1298 | To be assembled as 1. Bypassing M.V. Balls, anti-friction, 1/8". |
| 50 | OSER, 4140, coating handle | 1 | B.T.D. | 1299 | |
| 51 | PLATE, bolt, Mk.I. | 1 | B. | 1300 | To be assembled as 1. Bypassing M.V. Balls, anti-friction, 1/8". |
| 52 | SPRING | 1 | B. | 1301 | |
| 53 | OSER, 4140 | 1 | B.T.D. | 1302 | To be assembled as 1. Bypassing M.V. Balls, anti-friction, 1/8". |
| 54 | OSER, retaining, Mk.II, ball, mounting pin, 1/8" | 1 | B. | 1303 | |
| 55 | OSER, wood, rd. hd., No. 11 | 1 | B. | 1304 | To be assembled as 1. Bypassing M.V. Balls, anti-friction, 1/8". |
| 56 | REV. M.I. (1) round complete with | 1 | B.T.D. | 1305 | |
| 57 | OSER, 4140, coating handle | 1 | B.T.D. | 1306 | To be assembled as 1. Bypassing M.V. Balls, anti-friction, 1/8". |
| 58 | PLATE, bolt, Mk.I. | 1 | B. | 1307 | |
| 59 | SPRING | 1 | B. | 1308 | To be assembled as 1. Bypassing M.V. Balls, anti-friction, 1/8". |
| 60 | OSER, 4140 | 1 | B.T.D. | 1309 | |
| 61 | OSER, retaining, Mk.II, ball, mounting pin, 1/8" | 1 | B. | 1310 | To be assembled as 1. Bypassing M.V. Balls, anti-friction, 1/8". |
| 62 | OSER, wood, rd. hd., No. 11 | 1 | B. | 1311 | |

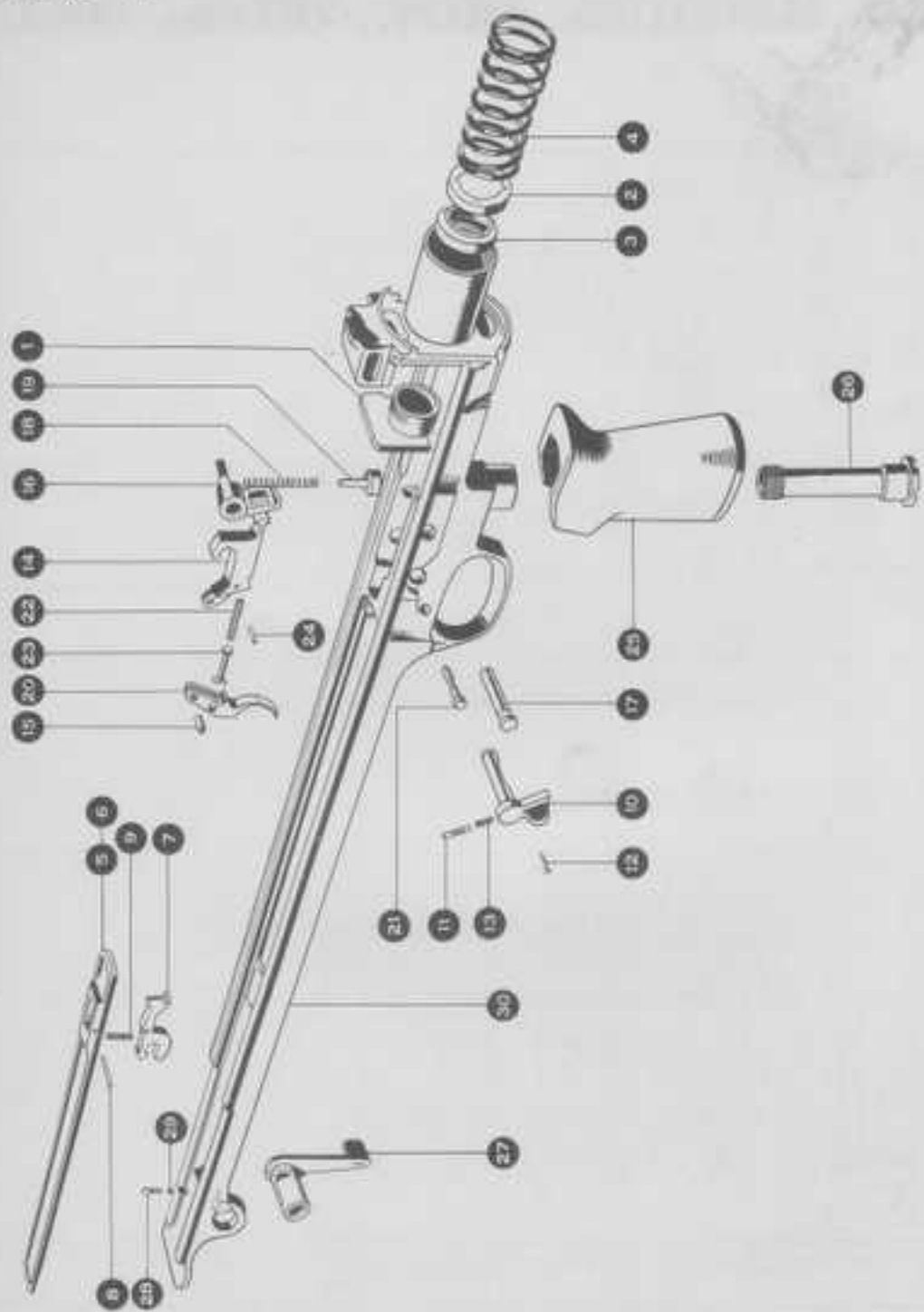
To be assembled as 1. Bypassing M.V. Balls, anti-friction, 1/8".

To be assembled as 1. Bypassing M.V. Balls, anti-friction, 1/8".

Obsolescence

M.I.L.D. 1000
1251
1252
1253
1254
1255
1256
1257
1258
1259
1260
1261
1262
1263
1264
1265
1266
1267
1268
1269
1270
1271
1272
1273
1274
1275
1276
1277
1278
1279
1280
1281
1282
1283
1284
1285
1286
1287
1288
1289
1290
1291
1292
1293
1294
1295
1296
1297
1298
1299
1300
1301
1302
1303
1304
1305
1306
1307
1308
1309
1310
1311

Plate E

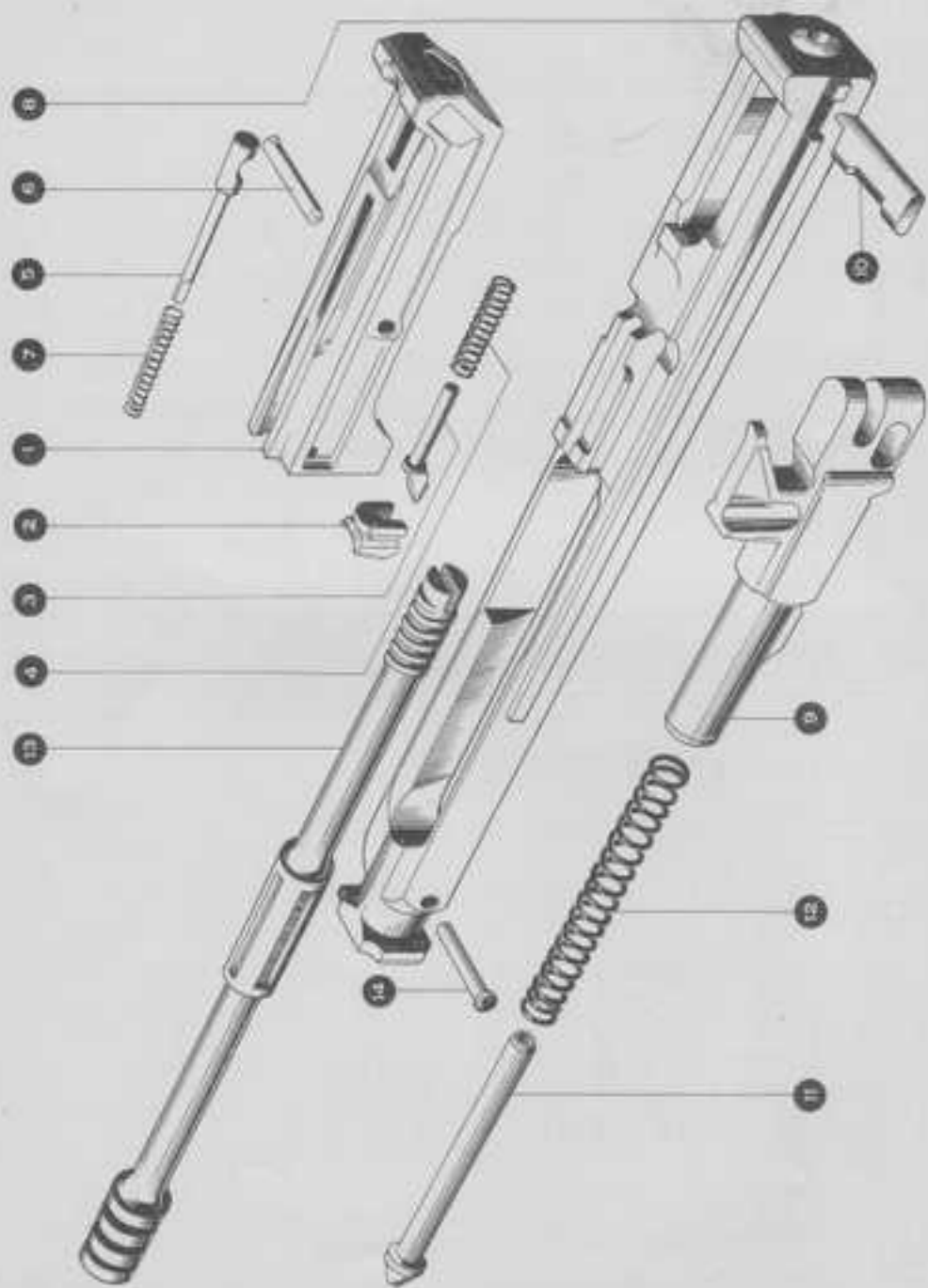


11 GUN, MACHINE, BREN, .303-in., Mk.I

| REF. NO. | DESCRIPTION | SOCAL NUMBER | REF. | PL. QTY | QUANTITY ORDERED | REMARKS |
|----------|--|--------------|--------|---------|------------------|--|
| 1 | INTERCHANGEABLE WITH NOS. 2, 3, 4, 5, 6, 7, 8, 9, 10, 11, 12, 13, 14, 15, 16, 17, 18, 19, 20, 21, 22, 23, 24, 25, 26, 27, 28, 29, 30 | | | | | Interchangeable with Nos. 2, 3, 4, 5, 6, 7, 8, 9, 10, 11, 12, 13, 14, 15, 16, 17, 18, 19, 20, 21, 22, 23, 24, 25, 26, 27, 28, 29, 30. M.I.I. |
| 2 | ... | 88 5425 | B.T.B. | 1 | 1550 | |
| 3 | ... | 88 5426 | B.T.B. | 1 | 1550 | |
| 4 | ... | 88 5427 | B.T.B. | 1 | 1550 | |
| 5 | ... | 88 5428 | B.T.B. | 1 | 1550 | |
| 6 | ... | 88 5429 | B.T.B. | 1 | 1550 | |
| 7 | ... | 88 5430 | B.T.B. | 1 | 1550 | |
| 8 | ... | 88 5431 | B.T.B. | 1 | 1550 | |
| 9 | ... | 88 5432 | B.T.B. | 1 | 1550 | |
| 10 | ... | 88 5433 | B.T.B. | 1 | 1550 | |
| 11 | ... | 88 5434 | B.T.B. | 1 | 1550 | |
| 12 | ... | 88 5435 | B.T.B. | 1 | 1550 | |
| 13 | ... | 88 5436 | B.T.B. | 1 | 1550 | |
| 14 | ... | 88 5437 | B.T.B. | 1 | 1550 | |
| 15 | ... | 88 5438 | B.T.B. | 1 | 1550 | |
| 16 | ... | 88 5439 | B.T.B. | 1 | 1550 | |
| 17 | ... | 88 5440 | B.T.B. | 1 | 1550 | |
| 18 | ... | 88 5441 | B.T.B. | 1 | 1550 | |
| 19 | ... | 88 5442 | B.T.B. | 1 | 1550 | |
| 20 | ... | 88 5443 | B.T.B. | 1 | 1550 | |
| 21 | ... | 88 5444 | B.T.B. | 1 | 1550 | |
| 22 | ... | 88 5445 | B.T.B. | 1 | 1550 | |
| 23 | ... | 88 5446 | B.T.B. | 1 | 1550 | |
| 24 | ... | 88 5447 | B.T.B. | 1 | 1550 | |
| 25 | ... | 88 5448 | B.T.B. | 1 | 1550 | |
| 26 | ... | 88 5449 | B.T.B. | 1 | 1550 | |
| 27 | ... | 88 5450 | B.T.B. | 1 | 1550 | |
| 28 | ... | 88 5451 | B.T.B. | 1 | 1550 | |
| 29 | ... | 88 5452 | B.T.B. | 1 | 1550 | |
| 30 | ... | 88 5453 | B.T.B. | 1 | 1550 | |

To be demoted as: Supplies M.V.
Balls, anti-friction, 1/32"

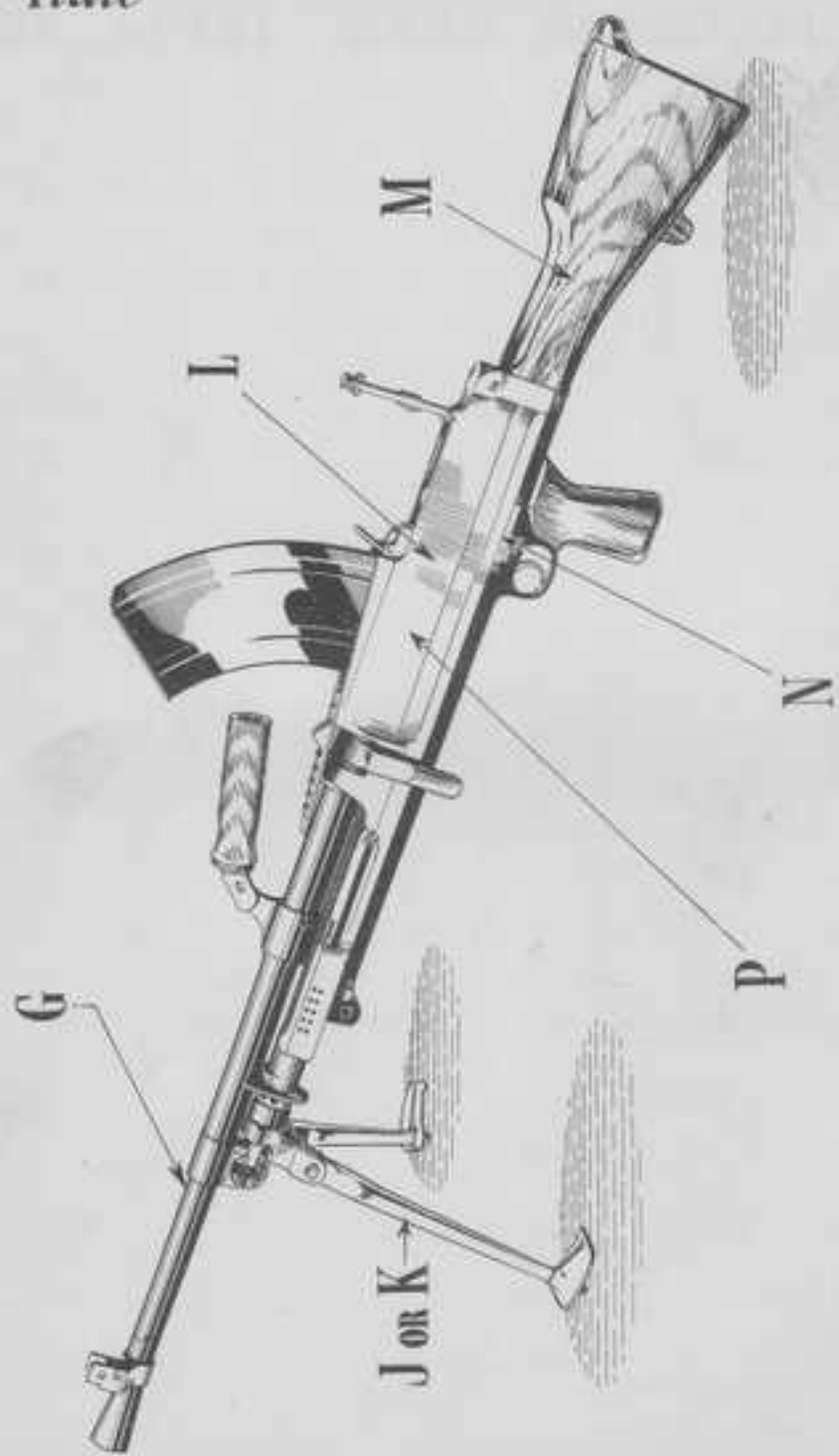
Plate F



GUN, MACHINE, BREN, .303-in., Mk.I

| REF. NO. | DESCRIPTION | QTY. | UNIT | FOCAL LENGTH | NO. OF | MARKING SYMBOL | REMARKS |
|----------|---------------------------------|------|--------|--------------|--------|----------------|---|
| 1 | THE MACHINE, MARK. 500-M, Mk.I. | 1 | E.T.C. | BE 342 34 | 1 | E.T.C. 1479 | I. Interchangeable with gun, machine, BREN, .303-in., Mk.I. |
| 2 | PISTOL & SHORT BLOC 200P | 1 | E.T.C. | 812 | 1 | E.T.C. 1479 | |
| 3 | BLK. BRKCH. AUGMENT | 1 | E.T.C. | 813 | 1 | E.T.C. 1479 | |
| 4 | MAGAZINE | 1 | E.T.C. | 814 | 1 | E.T.C. 1479 | |
| 5 | TRIP | 1 | E.T.C. | 815 | 1 | E.T.C. 1479 | |
| 6 | TRIP | 1 | E.T.C. | 816 | 1 | E.T.C. 1479 | |
| 7 | TRIP | 1 | E.T.C. | 817 | 1 | E.T.C. 1479 | |
| 8 | TRIP | 1 | E.T.C. | 818 | 1 | E.T.C. 1479 | |
| 9 | TRIP | 1 | E.T.C. | 819 | 1 | E.T.C. 1479 | |
| 10 | TRIP | 1 | E.T.C. | 820 | 1 | E.T.C. 1479 | |
| 11 | TRIP | 1 | E.T.C. | 821 | 1 | E.T.C. 1479 | |
| 12 | TRIP | 1 | E.T.C. | 822 | 1 | E.T.C. 1479 | |
| 13 | TRIP | 1 | E.T.C. | 823 | 1 | E.T.C. 1479 | |
| 14 | TRIP | 1 | E.T.C. | 824 | 1 | E.T.C. 1479 | |
| 15 | TRIP | 1 | E.T.C. | 825 | 1 | E.T.C. 1479 | |
| 16 | TRIP | 1 | E.T.C. | 826 | 1 | E.T.C. 1479 | |
| 17 | TRIP | 1 | E.T.C. | 827 | 1 | E.T.C. 1479 | |
| 18 | TRIP | 1 | E.T.C. | 828 | 1 | E.T.C. 1479 | |
| 19 | TRIP | 1 | E.T.C. | 829 | 1 | E.T.C. 1479 | |
| 20 | TRIP | 1 | E.T.C. | 830 | 1 | E.T.C. 1479 | |
| 21 | TRIP | 1 | E.T.C. | 831 | 1 | E.T.C. 1479 | |
| 22 | TRIP | 1 | E.T.C. | 832 | 1 | E.T.C. 1479 | |
| 23 | TRIP | 1 | E.T.C. | 833 | 1 | E.T.C. 1479 | |
| 24 | TRIP | 1 | E.T.C. | 834 | 1 | E.T.C. 1479 | |
| 25 | TRIP | 1 | E.T.C. | 835 | 1 | E.T.C. 1479 | |
| 26 | TRIP | 1 | E.T.C. | 836 | 1 | E.T.C. 1479 | |
| 27 | TRIP | 1 | E.T.C. | 837 | 1 | E.T.C. 1479 | |
| 28 | TRIP | 1 | E.T.C. | 838 | 1 | E.T.C. 1479 | |
| 29 | TRIP | 1 | E.T.C. | 839 | 1 | E.T.C. 1479 | |
| 30 | TRIP | 1 | E.T.C. | 840 | 1 | E.T.C. 1479 | |
| 31 | TRIP | 1 | E.T.C. | 841 | 1 | E.T.C. 1479 | |
| 32 | TRIP | 1 | E.T.C. | 842 | 1 | E.T.C. 1479 | |
| 33 | TRIP | 1 | E.T.C. | 843 | 1 | E.T.C. 1479 | |
| 34 | TRIP | 1 | E.T.C. | 844 | 1 | E.T.C. 1479 | |
| 35 | TRIP | 1 | E.T.C. | 845 | 1 | E.T.C. 1479 | |
| 36 | TRIP | 1 | E.T.C. | 846 | 1 | E.T.C. 1479 | |
| 37 | TRIP | 1 | E.T.C. | 847 | 1 | E.T.C. 1479 | |
| 38 | TRIP | 1 | E.T.C. | 848 | 1 | E.T.C. 1479 | |
| 39 | TRIP | 1 | E.T.C. | 849 | 1 | E.T.C. 1479 | |
| 40 | TRIP | 1 | E.T.C. | 850 | 1 | E.T.C. 1479 | |
| 41 | TRIP | 1 | E.T.C. | 851 | 1 | E.T.C. 1479 | |
| 42 | TRIP | 1 | E.T.C. | 852 | 1 | E.T.C. 1479 | |
| 43 | TRIP | 1 | E.T.C. | 853 | 1 | E.T.C. 1479 | |
| 44 | TRIP | 1 | E.T.C. | 854 | 1 | E.T.C. 1479 | |
| 45 | TRIP | 1 | E.T.C. | 855 | 1 | E.T.C. 1479 | |
| 46 | TRIP | 1 | E.T.C. | 856 | 1 | E.T.C. 1479 | |
| 47 | TRIP | 1 | E.T.C. | 857 | 1 | E.T.C. 1479 | |
| 48 | TRIP | 1 | E.T.C. | 858 | 1 | E.T.C. 1479 | |
| 49 | TRIP | 1 | E.T.C. | 859 | 1 | E.T.C. 1479 | |
| 50 | TRIP | 1 | E.T.C. | 860 | 1 | E.T.C. 1479 | |
| 51 | TRIP | 1 | E.T.C. | 861 | 1 | E.T.C. 1479 | |
| 52 | TRIP | 1 | E.T.C. | 862 | 1 | E.T.C. 1479 | |
| 53 | TRIP | 1 | E.T.C. | 863 | 1 | E.T.C. 1479 | |
| 54 | TRIP | 1 | E.T.C. | 864 | 1 | E.T.C. 1479 | |
| 55 | TRIP | 1 | E.T.C. | 865 | 1 | E.T.C. 1479 | |
| 56 | TRIP | 1 | E.T.C. | 866 | 1 | E.T.C. 1479 | |
| 57 | TRIP | 1 | E.T.C. | 867 | 1 | E.T.C. 1479 | |
| 58 | TRIP | 1 | E.T.C. | 868 | 1 | E.T.C. 1479 | |
| 59 | TRIP | 1 | E.T.C. | 869 | 1 | E.T.C. 1479 | |
| 60 | TRIP | 1 | E.T.C. | 870 | 1 | E.T.C. 1479 | |
| 61 | TRIP | 1 | E.T.C. | 871 | 1 | E.T.C. 1479 | |
| 62 | TRIP | 1 | E.T.C. | 872 | 1 | E.T.C. 1479 | |
| 63 | TRIP | 1 | E.T.C. | 873 | 1 | E.T.C. 1479 | |
| 64 | TRIP | 1 | E.T.C. | 874 | 1 | E.T.C. 1479 | |
| 65 | TRIP | 1 | E.T.C. | 875 | 1 | E.T.C. 1479 | |
| 66 | TRIP | 1 | E.T.C. | 876 | 1 | E.T.C. 1479 | |
| 67 | TRIP | 1 | E.T.C. | 877 | 1 | E.T.C. 1479 | |
| 68 | TRIP | 1 | E.T.C. | 878 | 1 | E.T.C. 1479 | |
| 69 | TRIP | 1 | E.T.C. | 879 | 1 | E.T.C. 1479 | |
| 70 | TRIP | 1 | E.T.C. | 880 | 1 | E.T.C. 1479 | |
| 71 | TRIP | 1 | E.T.C. | 881 | 1 | E.T.C. 1479 | |
| 72 | TRIP | 1 | E.T.C. | 882 | 1 | E.T.C. 1479 | |
| 73 | TRIP | 1 | E.T.C. | 883 | 1 | E.T.C. 1479 | |
| 74 | TRIP | 1 | E.T.C. | 884 | 1 | E.T.C. 1479 | |
| 75 | TRIP | 1 | E.T.C. | 885 | 1 | E.T.C. 1479 | |
| 76 | TRIP | 1 | E.T.C. | 886 | 1 | E.T.C. 1479 | |
| 77 | TRIP | 1 | E.T.C. | 887 | 1 | E.T.C. 1479 | |
| 78 | TRIP | 1 | E.T.C. | 888 | 1 | E.T.C. 1479 | |
| 79 | TRIP | 1 | E.T.C. | 889 | 1 | E.T.C. 1479 | |
| 80 | TRIP | 1 | E.T.C. | 890 | 1 | E.T.C. 1479 | |
| 81 | TRIP | 1 | E.T.C. | 891 | 1 | E.T.C. 1479 | |
| 82 | TRIP | 1 | E.T.C. | 892 | 1 | E.T.C. 1479 | |
| 83 | TRIP | 1 | E.T.C. | 893 | 1 | E.T.C. 1479 | |
| 84 | TRIP | 1 | E.T.C. | 894 | 1 | E.T.C. 1479 | |
| 85 | TRIP | 1 | E.T.C. | 895 | 1 | E.T.C. 1479 | |
| 86 | TRIP | 1 | E.T.C. | 896 | 1 | E.T.C. 1479 | |
| 87 | TRIP | 1 | E.T.C. | 897 | 1 | E.T.C. 1479 | |
| 88 | TRIP | 1 | E.T.C. | 898 | 1 | E.T.C. 1479 | |
| 89 | TRIP | 1 | E.T.C. | 899 | 1 | E.T.C. 1479 | |
| 90 | TRIP | 1 | E.T.C. | 900 | 1 | E.T.C. 1479 | |
| 91 | TRIP | 1 | E.T.C. | 901 | 1 | E.T.C. 1479 | |
| 92 | TRIP | 1 | E.T.C. | 902 | 1 | E.T.C. 1479 | |
| 93 | TRIP | 1 | E.T.C. | 903 | 1 | E.T.C. 1479 | |
| 94 | TRIP | 1 | E.T.C. | 904 | 1 | E.T.C. 1479 | |
| 95 | TRIP | 1 | E.T.C. | 905 | 1 | E.T.C. 1479 | |
| 96 | TRIP | 1 | E.T.C. | 906 | 1 | E.T.C. 1479 | |
| 97 | TRIP | 1 | E.T.C. | 907 | 1 | E.T.C. 1479 | |
| 98 | TRIP | 1 | E.T.C. | 908 | 1 | E.T.C. 1479 | |
| 99 | TRIP | 1 | E.T.C. | 909 | 1 | E.T.C. 1479 | |
| 100 | TRIP | 1 | E.T.C. | 910 | 1 | E.T.C. 1479 | |

Key Plate



GUN MACHINE BREN ·303 in. MK.II

Index to Key Plate

| <u>PLATE</u> | <u>PARTS</u> | <u>PAGE</u> |
|--------------|--|-------------|
| E | KEY MACHINE, BUSH . . . 503-4a., No. II. | 13 |
| G | BARREL GROUP, No. II. | 14 |
| J | SLIDE, No. II. | 15 |
| K | SLIDE, No. I. (OIA 11087) | 16 |
| L | SLIDE GROUP, No. II. | 17 |
| M | SLIDE GROUP, No. III. (DUTT 1000) | 18 |
| S | SLIDE GROUP, No. II. (SLIDE 1000) | 19 |
| P | PISTON & BARREL SLIDE GROUP | 20 |

GUN, MACHINE, BREN, .303-in., Mk.II

| REF. NO. | DESCRIPTION | QUANTITY | UNIT | REF. NO. | QUANTITY | UNIT | REMARKS |
|----------|----------------------------------|----------|------|-----------|----------|------|---|
| 1 | BARREL, 18 in., .303-in., Mk.II. | 1 | EA | 1001100A | 1 | EA | Assemblies or components interchangeable with Den. Assembly, 18 in., .303-in., Mk.II. |
| 2 | BARREL, 18 in., .303-in., Mk.II. | 1 | EA | 1001100B | 1 | EA | |
| 3 | BARREL, 18 in., .303-in., Mk.II. | 1 | EA | 1001100C | 1 | EA | |
| 4 | BARREL, 18 in., .303-in., Mk.II. | 1 | EA | 1001100D | 1 | EA | |
| 5 | BARREL, 18 in., .303-in., Mk.II. | 1 | EA | 1001100E | 1 | EA | |
| 6 | BARREL, 18 in., .303-in., Mk.II. | 1 | EA | 1001100F | 1 | EA | |
| 7 | BARREL, 18 in., .303-in., Mk.II. | 1 | EA | 1001100G | 1 | EA | |
| 8 | BARREL, 18 in., .303-in., Mk.II. | 1 | EA | 1001100H | 1 | EA | |
| 9 | BARREL, 18 in., .303-in., Mk.II. | 1 | EA | 1001100I | 1 | EA | |
| 10 | BARREL, 18 in., .303-in., Mk.II. | 1 | EA | 1001100J | 1 | EA | |
| 11 | BARREL, 18 in., .303-in., Mk.II. | 1 | EA | 1001100K | 1 | EA | |
| 12 | BARREL, 18 in., .303-in., Mk.II. | 1 | EA | 1001100L | 1 | EA | |
| 13 | BARREL, 18 in., .303-in., Mk.II. | 1 | EA | 1001100M | 1 | EA | |
| 14 | BARREL, 18 in., .303-in., Mk.II. | 1 | EA | 1001100N | 1 | EA | |
| 15 | BARREL, 18 in., .303-in., Mk.II. | 1 | EA | 1001100O | 1 | EA | |
| 16 | BARREL, 18 in., .303-in., Mk.II. | 1 | EA | 1001100P | 1 | EA | |
| 17 | BARREL, 18 in., .303-in., Mk.II. | 1 | EA | 1001100Q | 1 | EA | |
| 18 | BARREL, 18 in., .303-in., Mk.II. | 1 | EA | 1001100R | 1 | EA | |
| 19 | BARREL, 18 in., .303-in., Mk.II. | 1 | EA | 1001100S | 1 | EA | |
| 20 | BARREL, 18 in., .303-in., Mk.II. | 1 | EA | 1001100T | 1 | EA | |
| 21 | BARREL, 18 in., .303-in., Mk.II. | 1 | EA | 1001100U | 1 | EA | |
| 22 | BARREL, 18 in., .303-in., Mk.II. | 1 | EA | 1001100V | 1 | EA | |
| 23 | BARREL, 18 in., .303-in., Mk.II. | 1 | EA | 1001100W | 1 | EA | |
| 24 | BARREL, 18 in., .303-in., Mk.II. | 1 | EA | 1001100X | 1 | EA | |
| 25 | BARREL, 18 in., .303-in., Mk.II. | 1 | EA | 1001100Y | 1 | EA | |
| 26 | BARREL, 18 in., .303-in., Mk.II. | 1 | EA | 1001100Z | 1 | EA | |
| 27 | BARREL, 18 in., .303-in., Mk.II. | 1 | EA | 1001100AA | 1 | EA | |

Plate J

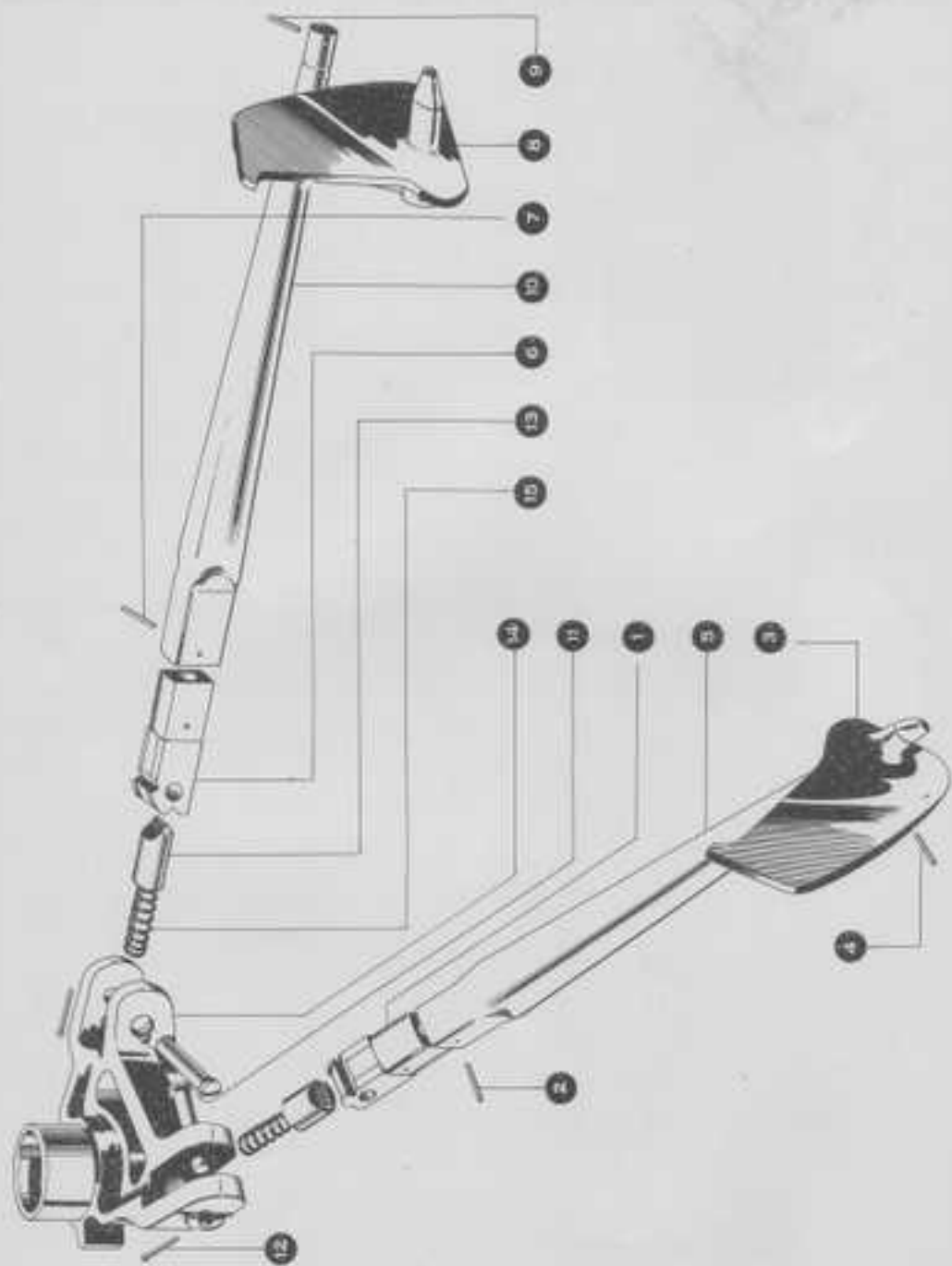
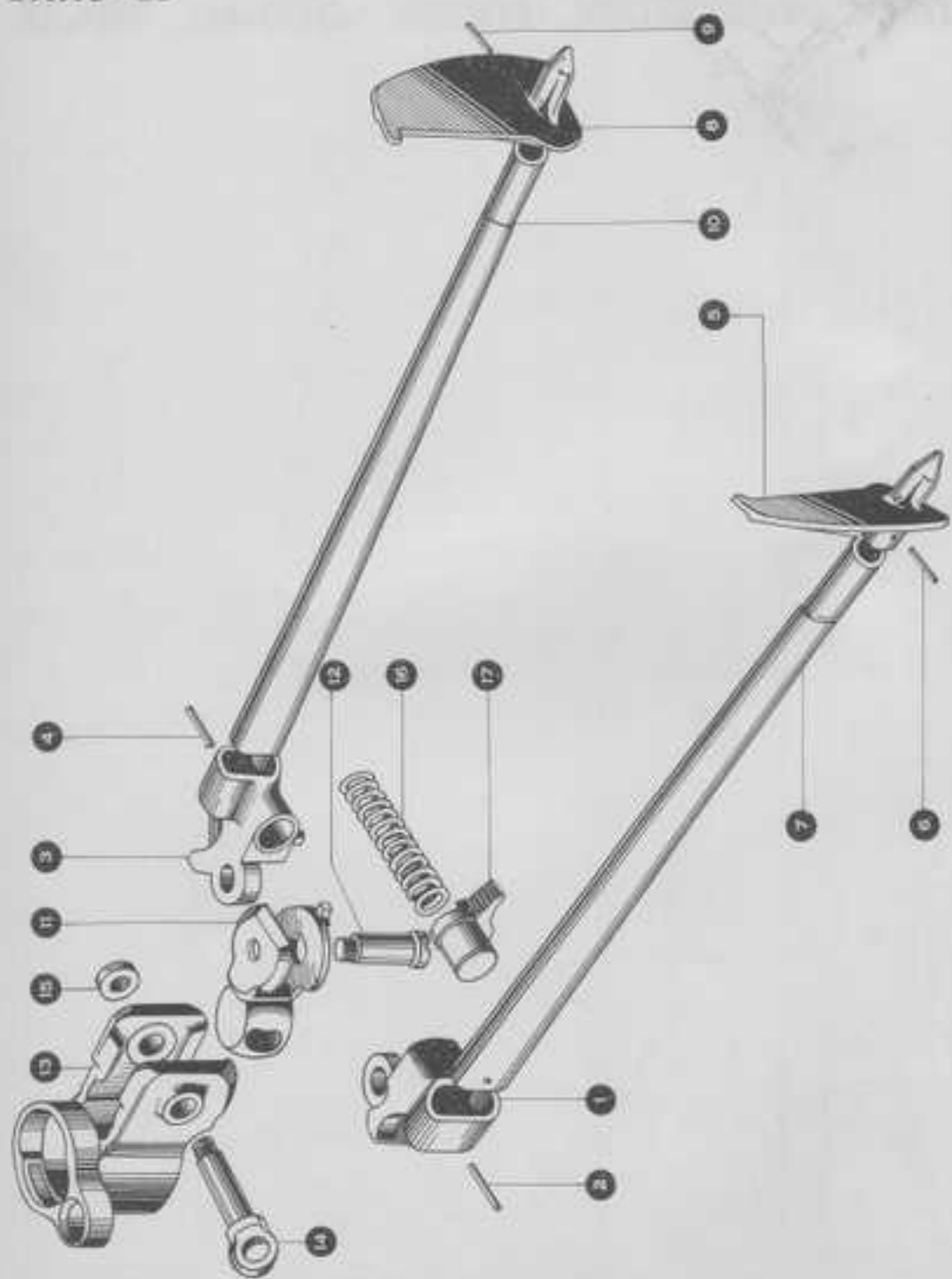


Plate K



GUN, MACHINE, BREN, .303-in., Mk.II

| REF. No. | Description | QTY. REQD. | WT. | REF. No. | ISSUES |
|----------|---|------------|-------|--------------|---|
| 1 | gun, machine, mm., M2-11a, Mk.II. (continued) | | | | |
| 2 | BARREL, Mk.II. | 1 | 167.0 | ASD(1)40E | 1 Assembly interchangeable with those mounted hereon, M2-11a, Mk.II, B.M.I. # Components interchangeable with M2-11, Mk.II. (M2-11a, Mk.II, B.M.I. - plates 1) |
| 3 | BARREL, Mk.II. | (1) | 167.0 | M.O.D. 10710 | |
| 4 | BARREL, Mk.II. | (1) | 167.0 | " " 1719 | |
| 5 | BARREL, Mk.II. | (1) | 167.0 | ASD(1)40E | |
| 6 | BARREL, Mk.II. | (1) | 167.0 | M.O.D. 10710 | |
| 7 | BARREL, Mk.II. | (1) | 167.0 | M.O.D. 10710 | |
| 8 | BARREL, Mk.II. | (1) | 167.0 | ASD(1)40E | |
| 9 | BARREL, Mk.II. | (1) | 167.0 | M.O.D. 10710 | |
| 10 | BARREL, Mk.II. | (1) | 167.0 | M.O.D. 10710 | |
| 11 | BARREL, Mk.II. | (1) | 167.0 | ASD(1)40E | |
| 12 | BARREL, Mk.II. | (1) | 167.0 | M.O.D. 10710 | |
| 13 | BARREL, Mk.II. | (1) | 167.0 | " " 1719 | |
| 14 | BARREL, Mk.II. | (1) | 167.0 | " " 1719 | |
| 15 | BARREL, Mk.II. | (1) | 167.0 | " " 1719 | |
| 16 | BARREL, Mk.II. | (1) | 167.0 | " " 1719 | |
| 17 | BARREL, Mk.II. | (1) | 167.0 | " " 1719 | |
| 18 | BARREL, Mk.II. | (1) | 167.0 | " " 1719 | |
| 19 | BARREL, Mk.II. | (1) | 167.0 | " " 1719 | |
| 20 | BARREL, Mk.II. | (1) | 167.0 | " " 1719 | |
| 21 | BARREL, Mk.II. | (1) | 167.0 | " " 1719 | |
| 22 | BARREL, Mk.II. | (1) | 167.0 | " " 1719 | |
| 23 | BARREL, Mk.II. | (1) | 167.0 | " " 1719 | |
| 24 | BARREL, Mk.II. | (1) | 167.0 | " " 1719 | |
| 25 | BARREL, Mk.II. | (1) | 167.0 | " " 1719 | |
| 26 | BARREL, Mk.II. | (1) | 167.0 | " " 1719 | |
| 27 | BARREL, Mk.II. | (1) | 167.0 | " " 1719 | |
| 28 | BARREL, Mk.II. | (1) | 167.0 | " " 1719 | |
| 29 | BARREL, Mk.II. | (1) | 167.0 | " " 1719 | |
| 30 | BARREL, Mk.II. | (1) | 167.0 | " " 1719 | |
| 31 | BARREL, Mk.II. | (1) | 167.0 | " " 1719 | |
| 32 | BARREL, Mk.II. | (1) | 167.0 | " " 1719 | |
| 33 | BARREL, Mk.II. | (1) | 167.0 | " " 1719 | |
| 34 | BARREL, Mk.II. | (1) | 167.0 | " " 1719 | |
| 35 | BARREL, Mk.II. | (1) | 167.0 | " " 1719 | |
| 36 | BARREL, Mk.II. | (1) | 167.0 | " " 1719 | |
| 37 | BARREL, Mk.II. | (1) | 167.0 | " " 1719 | |
| 38 | BARREL, Mk.II. | (1) | 167.0 | " " 1719 | |
| 39 | BARREL, Mk.II. | (1) | 167.0 | " " 1719 | |
| 40 | BARREL, Mk.II. | (1) | 167.0 | " " 1719 | |
| 41 | BARREL, Mk.II. | (1) | 167.0 | " " 1719 | |
| 42 | BARREL, Mk.II. | (1) | 167.0 | " " 1719 | |
| 43 | BARREL, Mk.II. | (1) | 167.0 | " " 1719 | |
| 44 | BARREL, Mk.II. | (1) | 167.0 | " " 1719 | |
| 45 | BARREL, Mk.II. | (1) | 167.0 | " " 1719 | |
| 46 | BARREL, Mk.II. | (1) | 167.0 | " " 1719 | |
| 47 | BARREL, Mk.II. | (1) | 167.0 | " " 1719 | |
| 48 | BARREL, Mk.II. | (1) | 167.0 | " " 1719 | |
| 49 | BARREL, Mk.II. | (1) | 167.0 | " " 1719 | |
| 50 | BARREL, Mk.II. | (1) | 167.0 | " " 1719 | |
| 51 | BARREL, Mk.II. | (1) | 167.0 | " " 1719 | |
| 52 | BARREL, Mk.II. | (1) | 167.0 | " " 1719 | |
| 53 | BARREL, Mk.II. | (1) | 167.0 | " " 1719 | |
| 54 | BARREL, Mk.II. | (1) | 167.0 | " " 1719 | |
| 55 | BARREL, Mk.II. | (1) | 167.0 | " " 1719 | |
| 56 | BARREL, Mk.II. | (1) | 167.0 | " " 1719 | |
| 57 | BARREL, Mk.II. | (1) | 167.0 | " " 1719 | |
| 58 | BARREL, Mk.II. | (1) | 167.0 | " " 1719 | |
| 59 | BARREL, Mk.II. | (1) | 167.0 | " " 1719 | |
| 60 | BARREL, Mk.II. | (1) | 167.0 | " " 1719 | |
| 61 | BARREL, Mk.II. | (1) | 167.0 | " " 1719 | |
| 62 | BARREL, Mk.II. | (1) | 167.0 | " " 1719 | |
| 63 | BARREL, Mk.II. | (1) | 167.0 | " " 1719 | |
| 64 | BARREL, Mk.II. | (1) | 167.0 | " " 1719 | |
| 65 | BARREL, Mk.II. | (1) | 167.0 | " " 1719 | |
| 66 | BARREL, Mk.II. | (1) | 167.0 | " " 1719 | |
| 67 | BARREL, Mk.II. | (1) | 167.0 | " " 1719 | |
| 68 | BARREL, Mk.II. | (1) | 167.0 | " " 1719 | |
| 69 | BARREL, Mk.II. | (1) | 167.0 | " " 1719 | |
| 70 | BARREL, Mk.II. | (1) | 167.0 | " " 1719 | |
| 71 | BARREL, Mk.II. | (1) | 167.0 | " " 1719 | |
| 72 | BARREL, Mk.II. | (1) | 167.0 | " " 1719 | |
| 73 | BARREL, Mk.II. | (1) | 167.0 | " " 1719 | |
| 74 | BARREL, Mk.II. | (1) | 167.0 | " " 1719 | |
| 75 | BARREL, Mk.II. | (1) | 167.0 | " " 1719 | |
| 76 | BARREL, Mk.II. | (1) | 167.0 | " " 1719 | |
| 77 | BARREL, Mk.II. | (1) | 167.0 | " " 1719 | |
| 78 | BARREL, Mk.II. | (1) | 167.0 | " " 1719 | |
| 79 | BARREL, Mk.II. | (1) | 167.0 | " " 1719 | |
| 80 | BARREL, Mk.II. | (1) | 167.0 | " " 1719 | |
| 81 | BARREL, Mk.II. | (1) | 167.0 | " " 1719 | |
| 82 | BARREL, Mk.II. | (1) | 167.0 | " " 1719 | |
| 83 | BARREL, Mk.II. | (1) | 167.0 | " " 1719 | |
| 84 | BARREL, Mk.II. | (1) | 167.0 | " " 1719 | |
| 85 | BARREL, Mk.II. | (1) | 167.0 | " " 1719 | |
| 86 | BARREL, Mk.II. | (1) | 167.0 | " " 1719 | |
| 87 | BARREL, Mk.II. | (1) | 167.0 | " " 1719 | |
| 88 | BARREL, Mk.II. | (1) | 167.0 | " " 1719 | |
| 89 | BARREL, Mk.II. | (1) | 167.0 | " " 1719 | |
| 90 | BARREL, Mk.II. | (1) | 167.0 | " " 1719 | |
| 91 | BARREL, Mk.II. | (1) | 167.0 | " " 1719 | |
| 92 | BARREL, Mk.II. | (1) | 167.0 | " " 1719 | |
| 93 | BARREL, Mk.II. | (1) | 167.0 | " " 1719 | |
| 94 | BARREL, Mk.II. | (1) | 167.0 | " " 1719 | |
| 95 | BARREL, Mk.II. | (1) | 167.0 | " " 1719 | |
| 96 | BARREL, Mk.II. | (1) | 167.0 | " " 1719 | |
| 97 | BARREL, Mk.II. | (1) | 167.0 | " " 1719 | |
| 98 | BARREL, Mk.II. | (1) | 167.0 | " " 1719 | |
| 99 | BARREL, Mk.II. | (1) | 167.0 | " " 1719 | |
| 100 | BARREL, Mk.II. | (1) | 167.0 | " " 1719 | |

Plate L

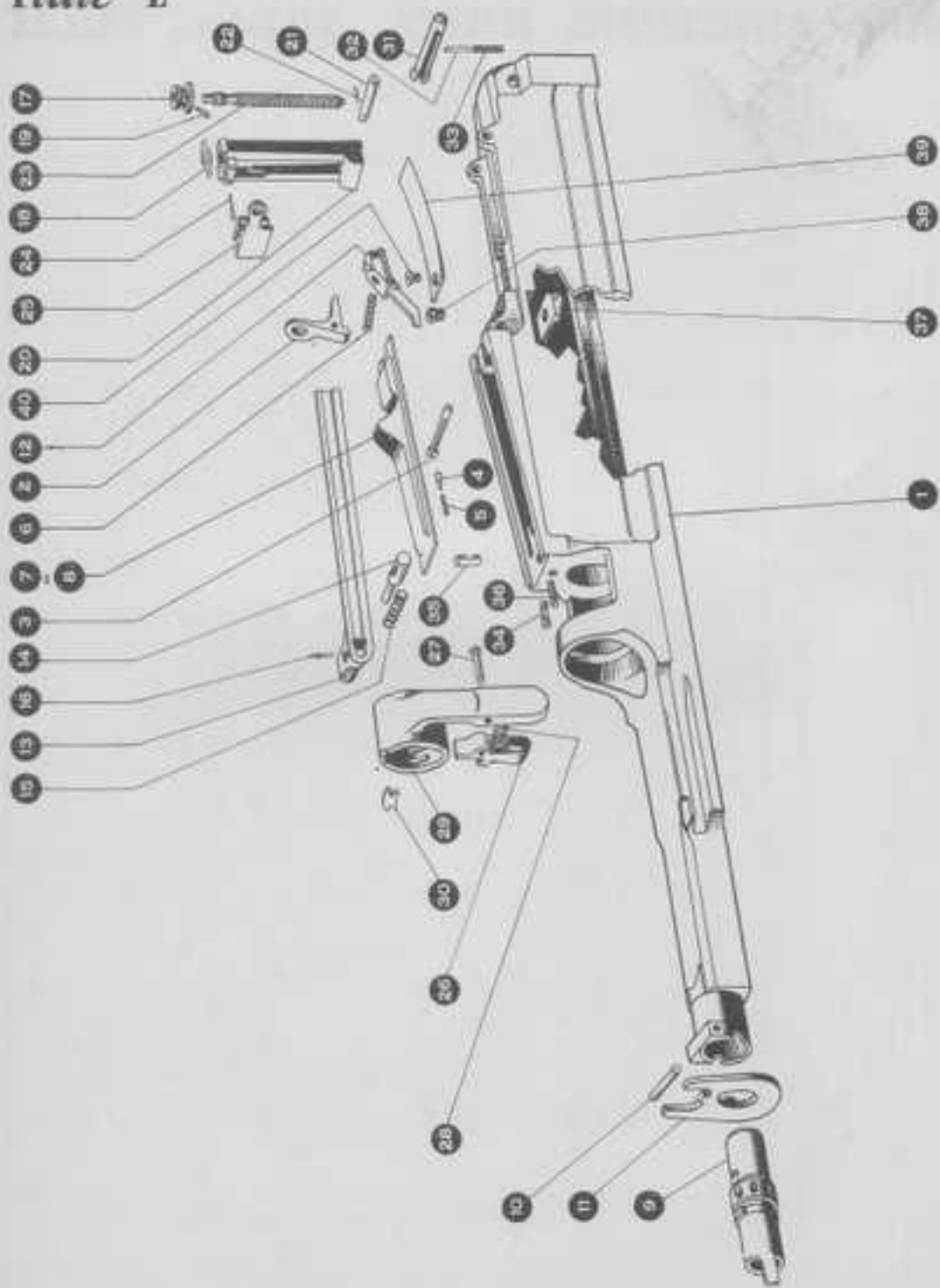
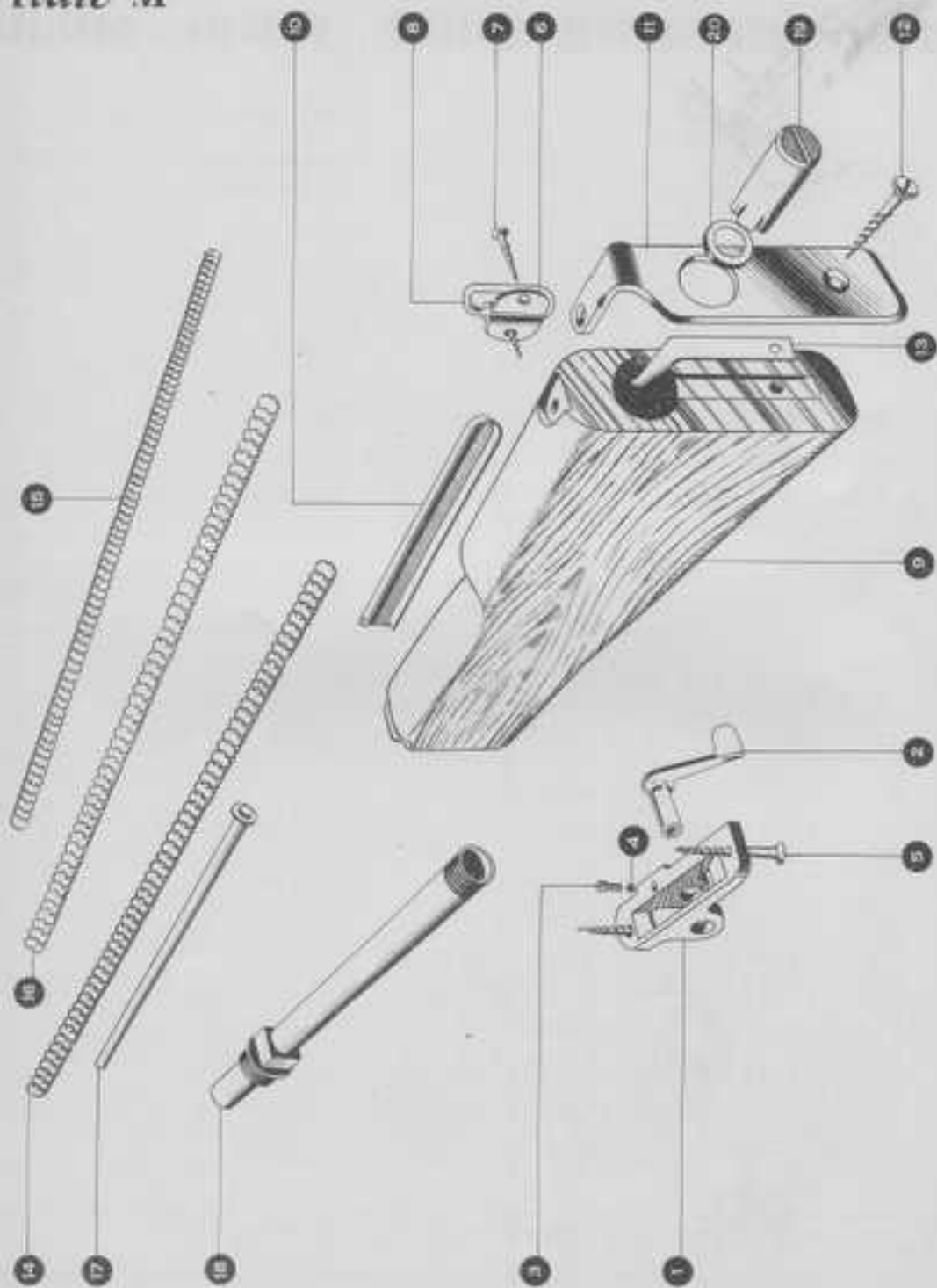


Plate M

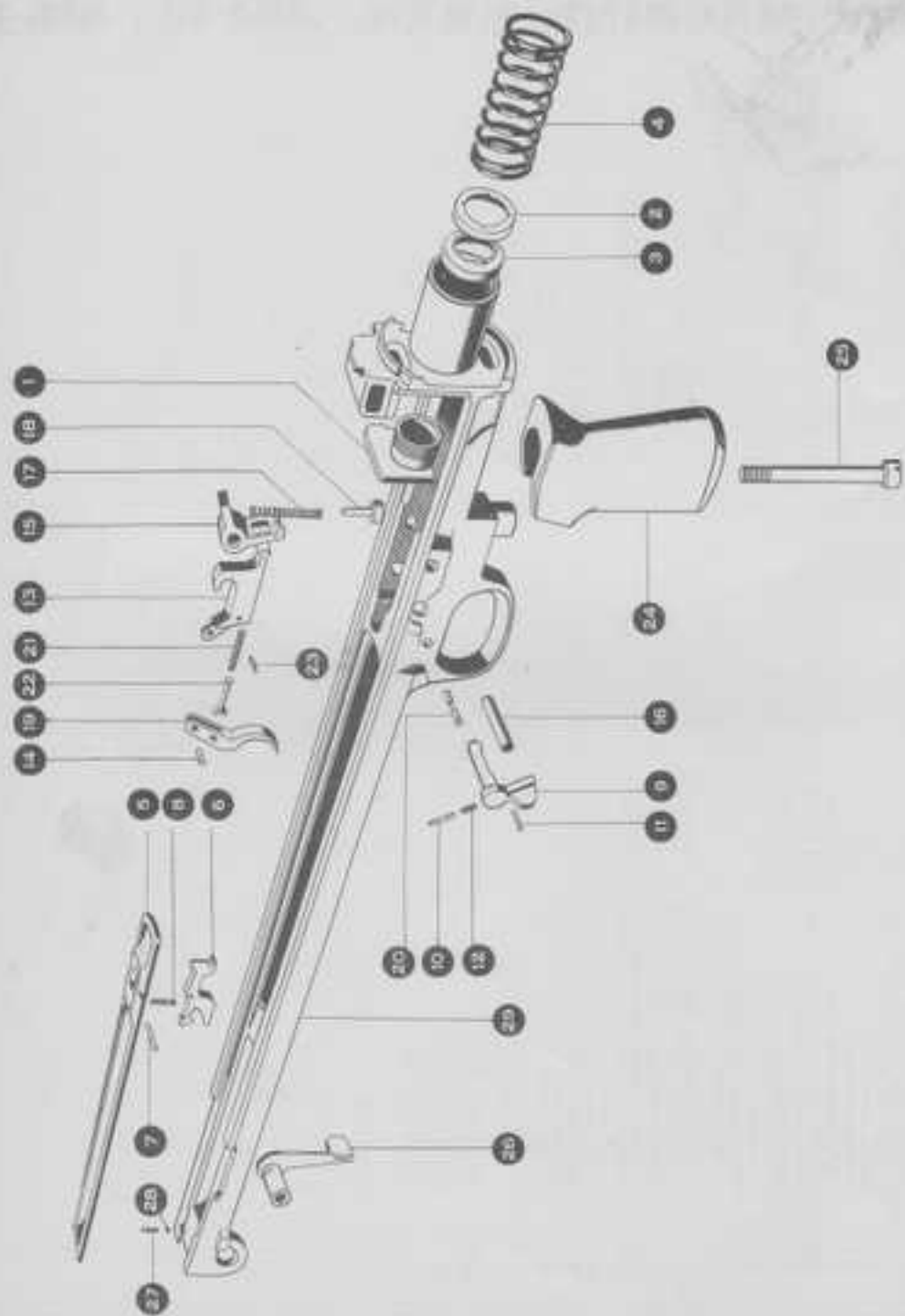


18

GUN, MACHINE, BREN, .303-in., Mk.II

| REF. NO. | DESCRIPTION | WEIGHT (LBS.) | MAT. | NO. (20) | STARTING NUMBER | REMARKS |
|----------|--------------------------------|---------------|--------|----------|-----------------|---|
| 1 | BAR, receiver, steel, .303-in. | 20 411.2 | S.P.S. | 1 | M.S.A. 2440 | |
| 2 | BAR, receiver, steel, .303-in. | 20 5670 | S.P.S. | 1 | " 3101 | |
| 3 | BRACKET, butt, steel | 20 8008 | S.P.S. | 1 | " 2992 | |
| 4 | BUZZ, mounting, steel | 20 0876 | St. | 1 | | To be domestic, see Receipt No. 7, Ball, anti-friction, 1/8". |
| 5 | BUZZ, wood, 1/2 in. dia. | 20 0907 | St. | 2 | " 3262 | |
| 6 | BUZZ, steel, (aluminum) | 20 2711 | St. | 1 | M.S.A. 2408 | |
| 7 | BUZZ, wood, 1/2 in. dia. | " 2155 | St. | 1 | M.S.A. 2445 | |
| 8 | BUZZ, steel, 1/2 in. dia. | " 0827 | St. | 1 | " 2443 | |
| 9 | BUZZ, steel, 1/2 in. dia. | " 4115 | wood | 1 | " 2428 | |
| 10 | BUZZ, steel, 1/2 in. dia. | " 9459 | St. | 1 | " 2231 | Interchangeable with Gun, Machine, Iron, .303-in., Mk.I. |
| 11 | BUZZ, steel, 1/2 in. dia. | " 1259 | S.P.S. | 1 | " 2428 | |
| 12 | BUZZ, wood, 1/2 in. dia. | " 2905 | St. | 2 | " 3265 | |
| 13 | BUZZ, steel, 1/2 in. dia. | " 4115 | St. | 1 | " 2420 | |
| 14 | BUZZ, steel, 1/2 in. dia. | " 0827 | St. | 1 | " 1379 | Best Mk.II, with barrel locked and Mk.II butt bracket (assembly) |
| 15 | BUZZ, steel, 1/2 in. dia. | " 0827 | St. | 1 | " 1595 | |
| 16 | BUZZ, steel, 1/2 in. dia. | " 0827 | St. | 1 | " 1596 | |
| 17 | BUZZ, steel, 1/2 in. dia. | " 0827 | St. | 1 | " 1553 | Alternative to Item 14 (Wood, St. for det of inner and outer springs) |
| 18 | BUZZ, steel, 1/2 in. dia. | " 0827 | St. | 1 | " 2428 | |
| 19 | BUZZ, steel, 1/2 in. dia. | " 1123 | S.P.S. | 1 | " 2427 | |
| 20 | BUZZ, steel, 1/2 in. dia. | " 4115 | St. | 1 | " 2427 | Mk.II (2005). |

Plate N



18 GUN, MACHINE, BREN, .303-in., Mk.II

| REF. | DESCRIPTION | QTY. | UNIT | UNIT PRICE | AMOUNT | REMARKS |
|------|---------------------------------------|------|------|------------|--------|---------|
| 1 | MT, machine, BREN, 303-in., Mk.II | 1 | EA | 3625 | 3625 | |
| 2 | MT, accessory (incl. 303 BREN, Mk.II) | 1 | EA | 3625 | 3625 | |
| 3 | MT, BREN, 303-in., Mk.II | 1 | EA | 3625 | 3625 | |
| 4 | MT, BREN, 303-in., Mk.II | 1 | EA | 3625 | 3625 | |
| 5 | MT, BREN, 303-in., Mk.II | 1 | EA | 3625 | 3625 | |
| 6 | MT, BREN, 303-in., Mk.II | 1 | EA | 3625 | 3625 | |
| 7 | MT, BREN, 303-in., Mk.II | 1 | EA | 3625 | 3625 | |
| 8 | MT, BREN, 303-in., Mk.II | 1 | EA | 3625 | 3625 | |
| 9 | MT, BREN, 303-in., Mk.II | 1 | EA | 3625 | 3625 | |
| 10 | MT, BREN, 303-in., Mk.II | 1 | EA | 3625 | 3625 | |
| 11 | MT, BREN, 303-in., Mk.II | 1 | EA | 3625 | 3625 | |
| 12 | MT, BREN, 303-in., Mk.II | 1 | EA | 3625 | 3625 | |
| 13 | MT, BREN, 303-in., Mk.II | 1 | EA | 3625 | 3625 | |
| 14 | MT, BREN, 303-in., Mk.II | 1 | EA | 3625 | 3625 | |
| 15 | MT, BREN, 303-in., Mk.II | 1 | EA | 3625 | 3625 | |
| 16 | MT, BREN, 303-in., Mk.II | 1 | EA | 3625 | 3625 | |
| 17 | MT, BREN, 303-in., Mk.II | 1 | EA | 3625 | 3625 | |
| 18 | MT, BREN, 303-in., Mk.II | 1 | EA | 3625 | 3625 | |
| 19 | MT, BREN, 303-in., Mk.II | 1 | EA | 3625 | 3625 | |
| 20 | MT, BREN, 303-in., Mk.II | 1 | EA | 3625 | 3625 | |
| 21 | MT, BREN, 303-in., Mk.II | 1 | EA | 3625 | 3625 | |
| 22 | MT, BREN, 303-in., Mk.II | 1 | EA | 3625 | 3625 | |
| 23 | MT, BREN, 303-in., Mk.II | 1 | EA | 3625 | 3625 | |
| 24 | MT, BREN, 303-in., Mk.II | 1 | EA | 3625 | 3625 | |
| 25 | MT, BREN, 303-in., Mk.II | 1 | EA | 3625 | 3625 | |
| 26 | MT, BREN, 303-in., Mk.II | 1 | EA | 3625 | 3625 | |
| 27 | MT, BREN, 303-in., Mk.II | 1 | EA | 3625 | 3625 | |
| 28 | MT, BREN, 303-in., Mk.II | 1 | EA | 3625 | 3625 | |
| 29 | MT, BREN, 303-in., Mk.II | 1 | EA | 3625 | 3625 | |
| 30 | MT, BREN, 303-in., Mk.II | 1 | EA | 3625 | 3625 | |
| 31 | MT, BREN, 303-in., Mk.II | 1 | EA | 3625 | 3625 | |
| 32 | MT, BREN, 303-in., Mk.II | 1 | EA | 3625 | 3625 | |
| 33 | MT, BREN, 303-in., Mk.II | 1 | EA | 3625 | 3625 | |
| 34 | MT, BREN, 303-in., Mk.II | 1 | EA | 3625 | 3625 | |
| 35 | MT, BREN, 303-in., Mk.II | 1 | EA | 3625 | 3625 | |
| 36 | MT, BREN, 303-in., Mk.II | 1 | EA | 3625 | 3625 | |
| 37 | MT, BREN, 303-in., Mk.II | 1 | EA | 3625 | 3625 | |
| 38 | MT, BREN, 303-in., Mk.II | 1 | EA | 3625 | 3625 | |
| 39 | MT, BREN, 303-in., Mk.II | 1 | EA | 3625 | 3625 | |
| 40 | MT, BREN, 303-in., Mk.II | 1 | EA | 3625 | 3625 | |
| 41 | MT, BREN, 303-in., Mk.II | 1 | EA | 3625 | 3625 | |
| 42 | MT, BREN, 303-in., Mk.II | 1 | EA | 3625 | 3625 | |
| 43 | MT, BREN, 303-in., Mk.II | 1 | EA | 3625 | 3625 | |
| 44 | MT, BREN, 303-in., Mk.II | 1 | EA | 3625 | 3625 | |
| 45 | MT, BREN, 303-in., Mk.II | 1 | EA | 3625 | 3625 | |
| 46 | MT, BREN, 303-in., Mk.II | 1 | EA | 3625 | 3625 | |
| 47 | MT, BREN, 303-in., Mk.II | 1 | EA | 3625 | 3625 | |
| 48 | MT, BREN, 303-in., Mk.II | 1 | EA | 3625 | 3625 | |
| 49 | MT, BREN, 303-in., Mk.II | 1 | EA | 3625 | 3625 | |
| 50 | MT, BREN, 303-in., Mk.II | 1 | EA | 3625 | 3625 | |
| 51 | MT, BREN, 303-in., Mk.II | 1 | EA | 3625 | 3625 | |
| 52 | MT, BREN, 303-in., Mk.II | 1 | EA | 3625 | 3625 | |
| 53 | MT, BREN, 303-in., Mk.II | 1 | EA | 3625 | 3625 | |
| 54 | MT, BREN, 303-in., Mk.II | 1 | EA | 3625 | 3625 | |
| 55 | MT, BREN, 303-in., Mk.II | 1 | EA | 3625 | 3625 | |
| 56 | MT, BREN, 303-in., Mk.II | 1 | EA | 3625 | 3625 | |
| 57 | MT, BREN, 303-in., Mk.II | 1 | EA | 3625 | 3625 | |
| 58 | MT, BREN, 303-in., Mk.II | 1 | EA | 3625 | 3625 | |
| 59 | MT, BREN, 303-in., Mk.II | 1 | EA | 3625 | 3625 | |
| 60 | MT, BREN, 303-in., Mk.II | 1 | EA | 3625 | 3625 | |
| 61 | MT, BREN, 303-in., Mk.II | 1 | EA | 3625 | 3625 | |
| 62 | MT, BREN, 303-in., Mk.II | 1 | EA | 3625 | 3625 | |
| 63 | MT, BREN, 303-in., Mk.II | 1 | EA | 3625 | 3625 | |
| 64 | MT, BREN, 303-in., Mk.II | 1 | EA | 3625 | 3625 | |
| 65 | MT, BREN, 303-in., Mk.II | 1 | EA | 3625 | 3625 | |
| 66 | MT, BREN, 303-in., Mk.II | 1 | EA | 3625 | 3625 | |
| 67 | MT, BREN, 303-in., Mk.II | 1 | EA | 3625 | 3625 | |
| 68 | MT, BREN, 303-in., Mk.II | 1 | EA | 3625 | 3625 | |
| 69 | MT, BREN, 303-in., Mk.II | 1 | EA | 3625 | 3625 | |
| 70 | MT, BREN, 303-in., Mk.II | 1 | EA | 3625 | 3625 | |

To be assembled as follows:
 1. BREN, 303-in., Mk.II
 2. BREN, 303-in., Mk.II
 3. BREN, 303-in., Mk.II

Plate P

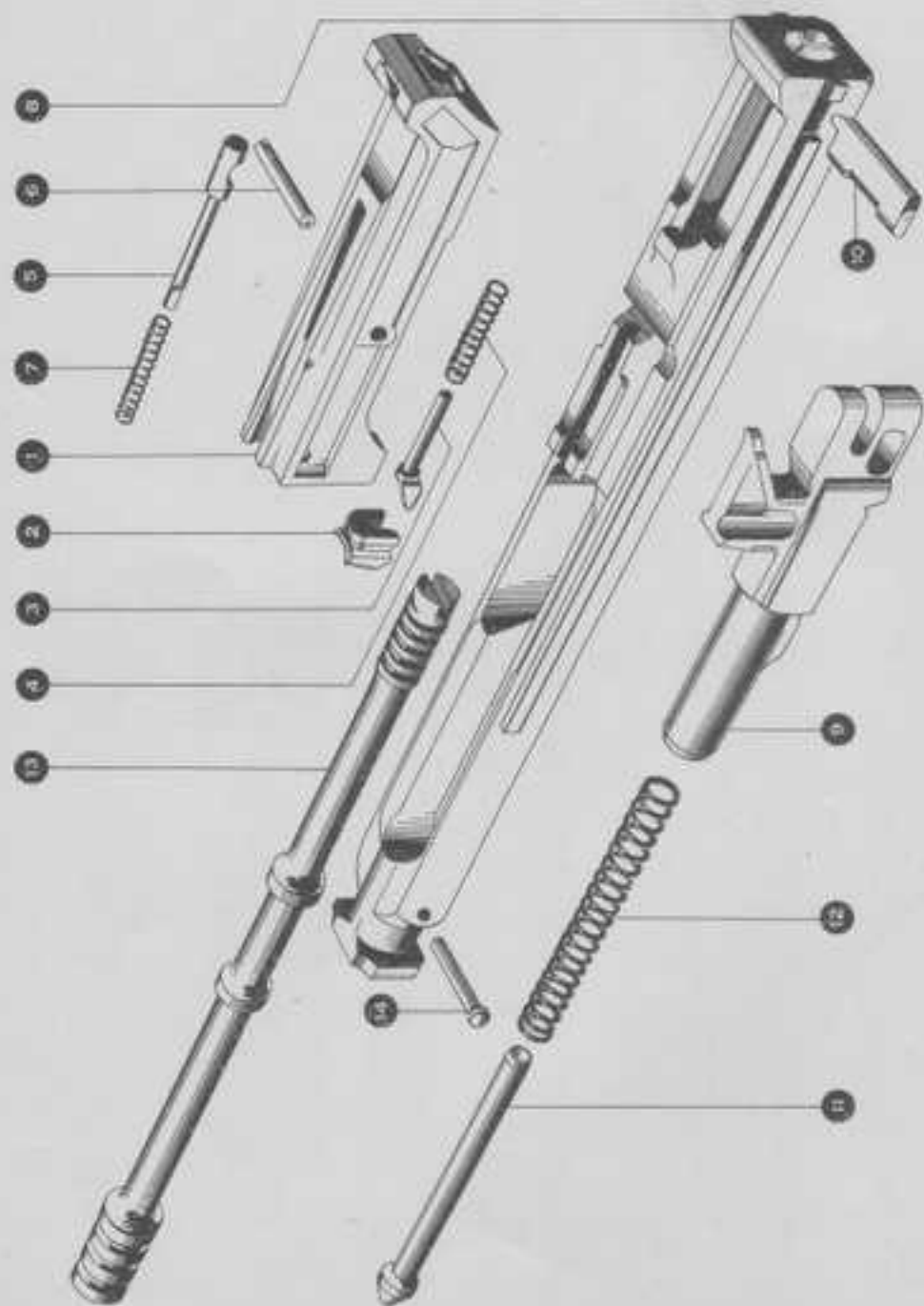
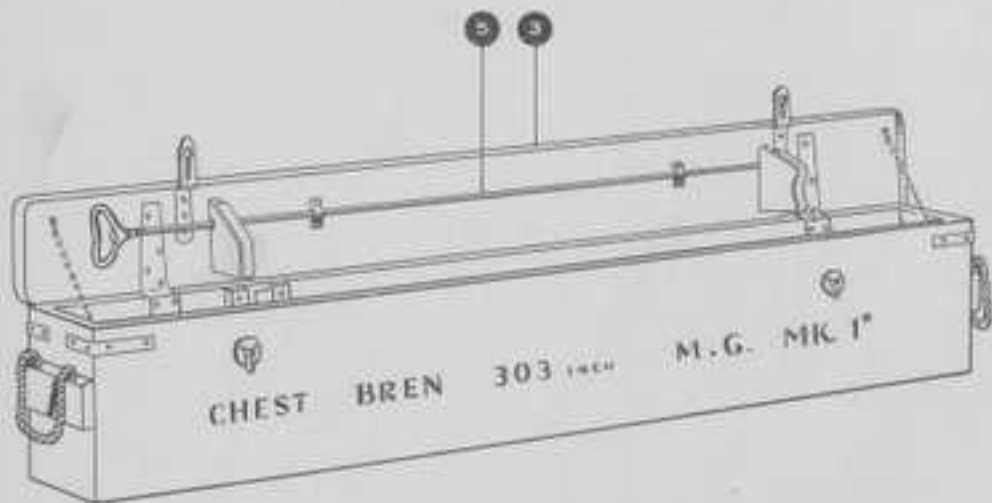


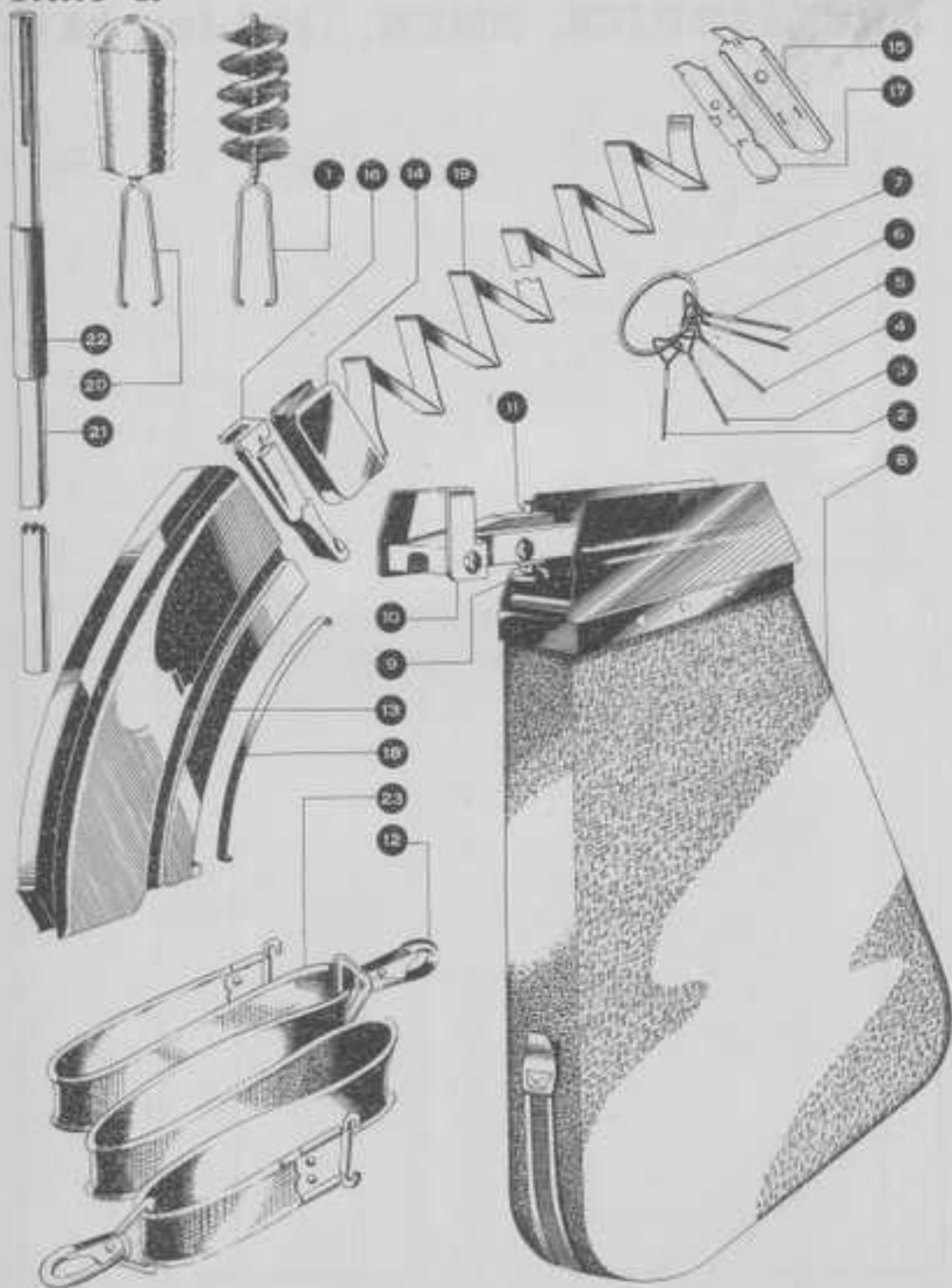
Plate Q



ACCESSORIES, BREN, .303-in., M.G.

| REF. NO. | DESIGNATION | YOCAS. NUMBER | MAT. | DRAWING NUMBER |
|----------|--|---------------|-------|----------------|
| . . . | ACCESSORIES, BREN, .303-in., M.G. | | | |
| 2 1 | BOX, battalion spares, Bren, .303-in., M.G., Mk.I (empty)* | BE.6055 | Wood. | |
| . . . | BOX, battalion spares, Bren, .303-in., M.G., (filled) "A" | BE.6065 | Wood. | |
| . . . | BOX, battalion spares, Bren, .303-in., M.G., (filled) "B" | BE.6066 | Wood. | |
| 2 | BOX, magazine, Bren, .303-in., M.G., Mk. I* ... * | BE.609A | St. | DD(E)3165 |
| 3 | CHEST, Bren, .303-in., M.G., Mk.I* ... * | BE.6231 | Wood. | * 1822 |
| 4 | WELDER, Bren, .303-in., M.G., Mk.I ... * | BE.9445 | Ovs. | * 2890 |
| 5 | BOX, cleaning, .303-in., M.G., Mk.II, "B" ... * | BE.2253 | St. | |
| . . . CB | BOX, cleaning, .303-in., M.G., Mk.II, "B" (Asst.) ... * | GAA.3405 | St. | ADD (B) 1-100 |

Plate R

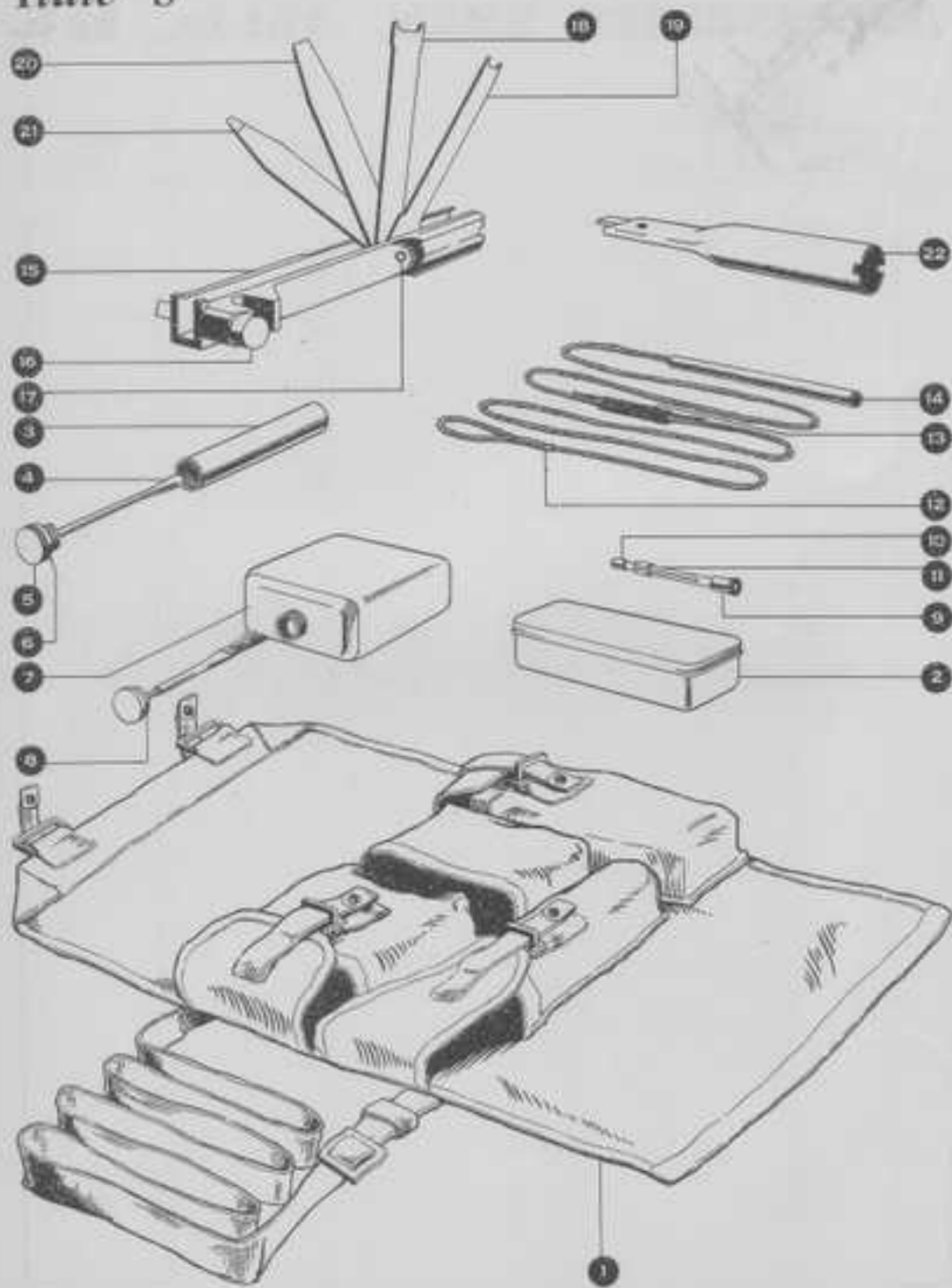


ACCESSORIES, BREN, .303-in., M.G.

| REF. NO. | DESIGNATION | VOCAB. NUMBER | MAT. | DRAWING NUMBER |
|----------|--|---------------|-------|----------------|
| ... | ACCESSORIES, BREN, .303-in., M.G. (continued) | | | |
| 1 | BUSH, rod, cleaning cylinder, .303-in., M.G., Wk.II | BE.4138 | Wire. | DD(X)2904 |
| 2 | CLEANER, GAS REGULATOR, BREN, .303-in., M.G., Wk.II | BE.9624 | A | " 2375 |
| 3 | REAMER, No.1, .100" dia. ... | BE.9587 | St. | " 2375 |
| 4 | REAMER, No.5, .165" dia. ... | BE.9591 | St. | " " |
| 5 | REAMER, No.6, .119" dia. ... | BE.9625 | St. | " " |
| 6 | REAMER, No.7, .131" dia. ... | BE.9626 | St. | " " |
| 7 | REAMER, No.8, .118" dia. ... | BE.9637 | St. | " " |
| 8 | RING, oval, 1-3/8" x 7/8" commercial key ring | BE.6460 | St. | " " |
| 9 | REFLECTOR, CARTRIDGE CASE, BREN, .303-in., M.G., Wk.II | BE.9536 | A | " 1996 |
| 10 | RAP, Wk.II (complete) ... | BE.9786 | Crs. | " " |
| 11 | CATCH ... | BE.9787 | St. | " " |
| 12 | FRAME, Wk.II (complete) ... | BE.9788 | St. | " " |
| 13 | SPRING, catch ... | BE.9789 | S.S. | " " |
| 14 | HOOK, sling, universal | CAA.1400 | | ADD(1317-100) |
| 15 | MAGAZINE, Bren, .303-in., M.G., NO.1, Wk.II* | BE.8809 | A | DD(X)2942 |
| 16 | CASK, magazine, Wk.II ... | | St. | M.G.D.1438 |
| 17 | GUIDE, platform ... | BE.9540 | St. | " 1432 |
| 18 | PLATE, bottom, Wk.I* ... | BE.9546 | St. | " 1433 |
| 19 | PLATFORM, Wk.III ... | BE.8995 | St. | " 1434 |
| 20 | RETAINER, bottom plate, Wk.I* ... | BE.9540 | St. | " 1435 |
| 21 | SPRING, auxiliary ... | BE.9545 | S.S. | " 1437 |
| 22 | SPRING, platform, Wk.II ... | BE.9549 | S.S. | " 1450 |
| 23 | ROD, rod, cleaning cylinder, .303-in., M.G., Wk.II | BE.9207 | Wood. | DD(E)2905 |
| 24 | ROD, cleaning cylinder, Bren, .303-in., M.G., Wk.II | BE.4197 | Wood. | " 2906 |
| 25 | SCREW ... | BE.4200 | St. | " 2906 |
| 26 | SLING, S.M.G., web (Aust.) # | CAA.5600 | Web. | |
| 27 | SLING, Rifle, Web (used for Mount, Tripod) # | AA.1657 | Web. | B.212 |

SLING, S.M.G., web (Aust.), is similar to but 11 inches longer than SLING, rifle, web.

Plate S

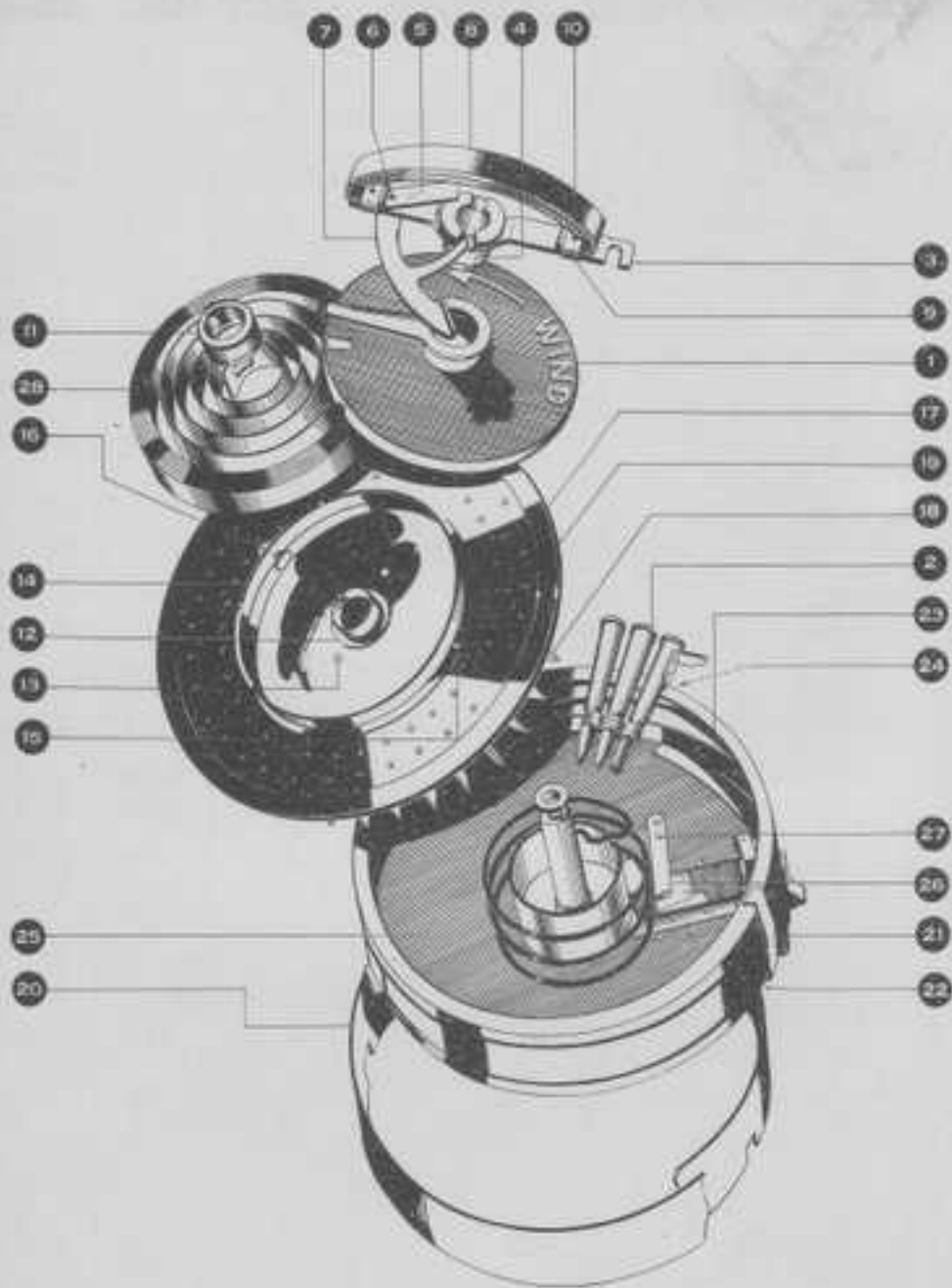


ACCESSORIES, BREN, .303-in., M.G.

| REF. NO. | DESIGNATION | VOCSB. NUMBER | NAT. | SHIPPING NUMBER |
|----------|--|---------------|------|-----------------|
| ... | ACCESSORIES, BREN, .303-in., M.G. (continued) | | | |
| ... | PULLBROUGH, SINGLE, Mk.IV "A" | BA.0517 | | |
| ... | COND, single | BB.0520 | | |
| ... | GAUGE | BB.0521 | | |
| ... | WEIGHT | BB.0522 | Br. | |
| 3 1 | VALLET, spare parts, Bren, .303-in., M.G., Mk.I (empty) | BB.9543 | Cvs. | AIB(3)167 |
| ... | VALLET, spare parts, Bren, .303-in., M.G., Mk.I (filled) | BB.9544 | | |
| | Containing :- | | | |
| 2 | NOX, small parts, M.G., No.4, Mk.I | BB.6063 | St. | DD(X)1897 |
| 3 | BOTTLE, oil, Mk.IV (complete) § | BA.0053 | Br. | A.I.D. 959 A |
| 4 | SPOON | BB.0054 | St. | " " " |
| 5 | STOPPER | BB.0055 | St. | " " " |
| 6 | WASHER | BB.0056 | L. | " " " |
| 7 | CAN, oil, M.G., Mk.III (complete) | BB.6167 | St. | DD(X)1800 |
| 8 | WASHER, leather | BB.6173 | L. | " " " |
| ... | PLUG, CLEARING, .303-in., M.G., Mk.I | BB.2503 | | " 7815 |
| 9 | HEAD | | St. | " " |
| 10 | PLEWNER | | St. | " " |
| 11 | SYM | | St. | " " |
| ... | PULLBROUGH, DOUBLE, Mk.I, "A" | BA.0515 | | |
| 12 | COND, double | BB.0519 | | |
| 13 | GAUGE | BB.0521 | | |
| 14 | WEIGHT | BB.0522 | Br. | |
| ... | TOOL, COMBINATION, BREN, .303-in., M.G., Mk.I | BB.9080 | | DD(X)1801 |
| 15 | BODY | | St. | K.O.D. 1547 |
| 16 | HARKER, copper | BB.9090 | C. | " 1548 |
| 17 | PIB, screwdriver | BB.9082 | St. | " 1553 |
| 18 | SCREWDRIVER, forged, large | BB.9083 | St. | " 1550 |
| 19 | SCREWDRIVER, forged, small | BB.9084 | St. | " 1551 |
| 20 | SCREWDRIVER, large | BB.9085 | St. | " 1549 |
| 21 | SCREWDRIVER, small | BB.9086 | St. | " 1550 |
| 22 or | TOOL, COMBINATION, BREN, .303-in., M.G., Mk.II | BB.4040 | St. | DD(X)9684 |

§ BOTTLE, oil, Mk.V (Vocsb.No. BA.6320) may be issued in lieu of Bottle, oil, Mk.IV.

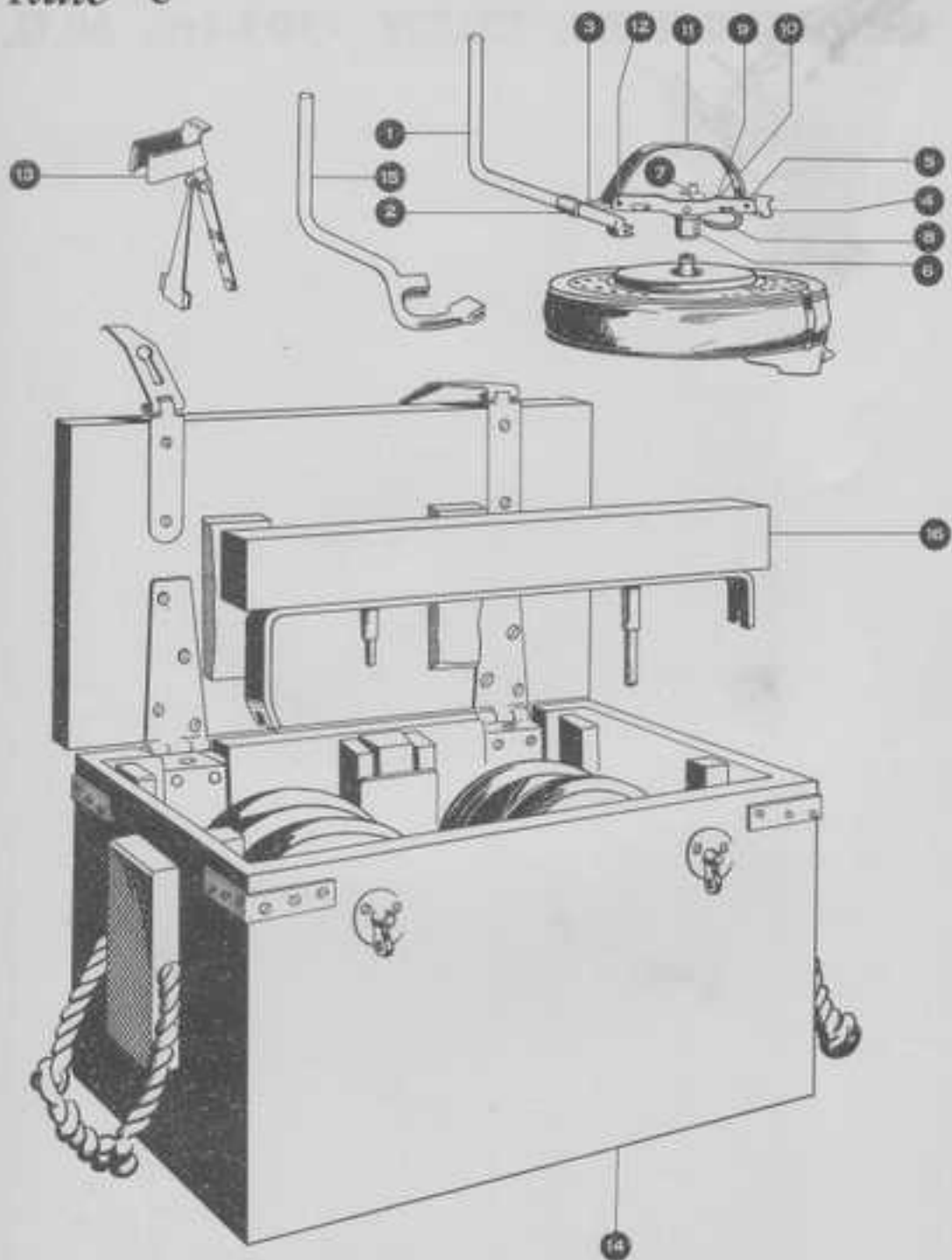
Plate T



ACCESSORIES, BREN, .303-in., M.G.

| REF. NO. | DESIGNATION | VOCAL. NUMBER | MAT. | NO. OFF. | DRAWING NUMBER |
|----------|---|---------------|------|----------|----------------|
| | ACCESSORIES, BREN, .303-in., M.G. (continued) | | | | |
| | EQUIPMENTS, BREN, 100 ROUNDS MAGAZINE, Mk.I ... * | BB 8985 | | | |
| | MAGAZINE, BREN, 100 ROUNDS, Mk.I ... * | " 8803 A | | 1 | ED(X) 2367 |
| 1 | COVER, plate, top ... * | " 4102 | St. | 1 | M.G.D. 2129 |
| 2 | FOLLOWER (assembled) ... * | " 4103 | St. | 1 | M.G.A. 2320 |
| | HANDLE, Mk.I, ASSEMBLY ... * | " 4104 BA | | 1 | " 2149 |
| 3 | LEVER, loading, Mk.I ... * | | St. | 1 | M.G.D. 2133 |
| 4 | PUSH, handle, Mk.I ... * | | St. | 1 | " 2136 |
| 5 | PLATE, securing, loading lever, Mk.I ... * | " 4106 | St. | 1 | " 2136 |
| 6 | RIVET ... * | " 4108 | St. | 1 | " 331 |
| 7 | RETAINER, top, plate, Mk.I ... * | " 4107 | St. | 1 | " 2134 |
| 8 | SNAP, handle, Mk.I ... * | " 4110 | Web. | 1 | " 2147 |
| 9 | PLATE, Mk.I ... * | | St. | 2 | " 2137 |
| 10 | RIVET ... * | | St. | 2 | " 1033 |
| 11 | HUB, main spring, Mk.III ... * | " 9234 | St. | 1 | " 2155 |
| | PLATE, TOP, ASSEMBLY, NO.2 ... * | " 9397 BA | | 1 | M.G.A. 2138 |
| 12 | CEWIRE-PIN, top plate cover ... * | | St. | 1 | M.G.D. 2127 |
| 13 | RIVET ... * | | St. | 2 | " 2113 |
| 14 | FLANGE, inner ... * | | St. | 1 | " 2130 |
| 15 | RIVET ... * | | St. | 3 | " 2140 |
| 16 | FIN, securing, main spring ... * | " 9398 | St. | 1 | " 2139 |
| 17 | PLATE, top ... * | | St. | 1 | " 2158 |
| 18 | SEPARATOR ... * | | St. | 35 | " 2144 |
| 19 | RIVET ... * | | St. | 70 | " 2142 |
| | PLATE, BOTTOM, ASSEMBLY, Mk.II ... * | | St. | 1 | M.G.A. 2569 |
| 20 | BAND, protector ... * | " 4100 | St. | 1 | M.G.D. 2305 |
| 21 | CLIP, plate, top ... * | " 9396 | St. | 1 | " 2304 |
| 22 | RIVET ... * | | St. | 112 | " 2116 |
| 23 | GUIDE, bullet ... * | | S.S. | 1 | " 2535 |
| 24 | FIN, stop, follower ... * | " 9399 | St. | 1 | " 2104 |
| 25 | PLATE, bottom (complete) ... * | | St. | 1 | |
| 26 | SPRING, deflector, cartridge ... * | " 9379 | S.S. | 1 | " 2312 |
| 27 | RIVET ... * | | St. | 131 | " 2116 |
| 28 | SPRING, main, Mk.II ... * | " 9239 | S.S. | 1 | " 2156 |
| | MAGAZINE, Bren, 100 rounds, Mk.II (Plate D) ... * | | | | |

Plate U



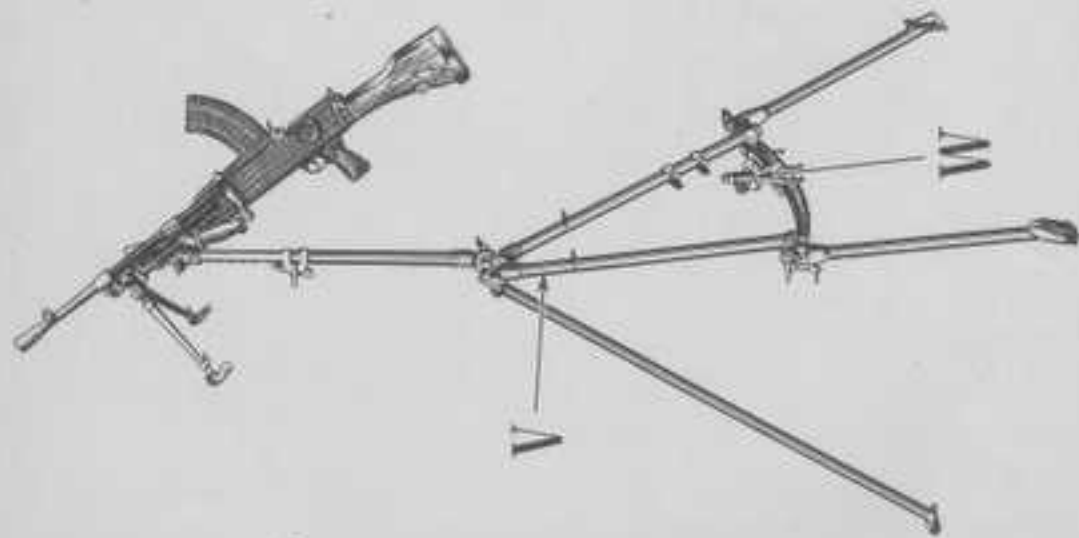
ACCESSORIES, BREN, .303-in., M.G.

| REF. NO. | DESIGNATION | YOUB. NUMBER | MAT. | QTY. OFF. | DRAWING NUMBER |
|----------|--|--------------|------|-----------|----------------|
| ... | ACCESSORIES, BREN, .303-in., M.G. (continued) | | | | |
| ... | EQUIPMENTS, BREN, 100 ROUNDS MAGAZINE, Mk.I | | | | |
| ... | MAGAZINE, BREN, 100 ROUNDS, Mk.II ... | BE 9211 A | | 1 | ID(R) 2914 |
| | Note:- Magazine, Mk.II is similar to Magazine, Mk.I with the exception of the Handle assembly, which incorporates Handle, winding. | | | | |
| | Details of Handle, Mk.II assembly are as follows : | | | | |
| ... | HANDLE, Mk.II, ASSEMBLY ... * * | BE 9211 BA | | 1 | M.O.A. 2559 |
| 1 | HANDLE, winding ... * * | " 9661 | St. | 1 | M.O.A. 2545 |
| 2 | BRACKET ... * * | " 9650 | St. | 1 | " 2524 |
| 3 | RIVET ... * * | " 9219 | St. | (1) 1 | " 878 |
| 4 | CLIP ... * * | " 9213 | S.S. | 1 | " 2553 |
| 5 | LEVER, loading, Mk.II ... * * | " 9656 | St. | 1 | " 2559 |
| 6 | BUSH, handle, Mk.II ... * * | " 9217 | St. | 1 | " 2553 |
| 7 | PLATE, securing, loading lever, Mk.II ... * * | " 9218 | St. | 1 | " 2552 |
| 8 | RETAINER, top plate, Mk.II ... * * | " 9219 | St. | 1 | " 2545 |
| 9 | RIVET ... * * | " 9219 | St. | (1) 1 | " 878 |
| 10 | WASHER ... * * | " 9655 | St. | 1 | " 2556 |
| 11 | WASHER, handle, Mk.II ... * * | " 9209 | Web. | 1 | " 2544 |
| 12 | PIE ... * * | " 9652 | St. | 2 | " 2556 |
| ... | ACCESORIES, MAGAZINE, BREN, 100 ROUNDS, Mk.I AND Mk.II | | | | |
| 13 | BRACKET, magazine, Bren, 100 rounds, Mk.II * | " 5814 | St. | 1 | ID(R) 2657 |
| 14 | CHUCKS, equipment, Bren, 100 rounds, Mag., Mk.I | " 6268 | Wood | 1 | " 2720 |
| 15 | § HANDLES, winding, Bren, 100 rounds, Mag., Mk.II | " 4230 | St. | 1 | " 2556 |
| 16 | HOLDERS, filling and winding, Bren, 100 rounds, Mag., Mk.I ... * | " 6371 | | 1 | " 2712 |
| | § Used for winding Magazine, Bren, 100 rounds, Mk.I only. | | | | |

Key Plate

MOUNTING TRIPOD BREN

.303 in. M.G. Mk. I



Index to Key Plate

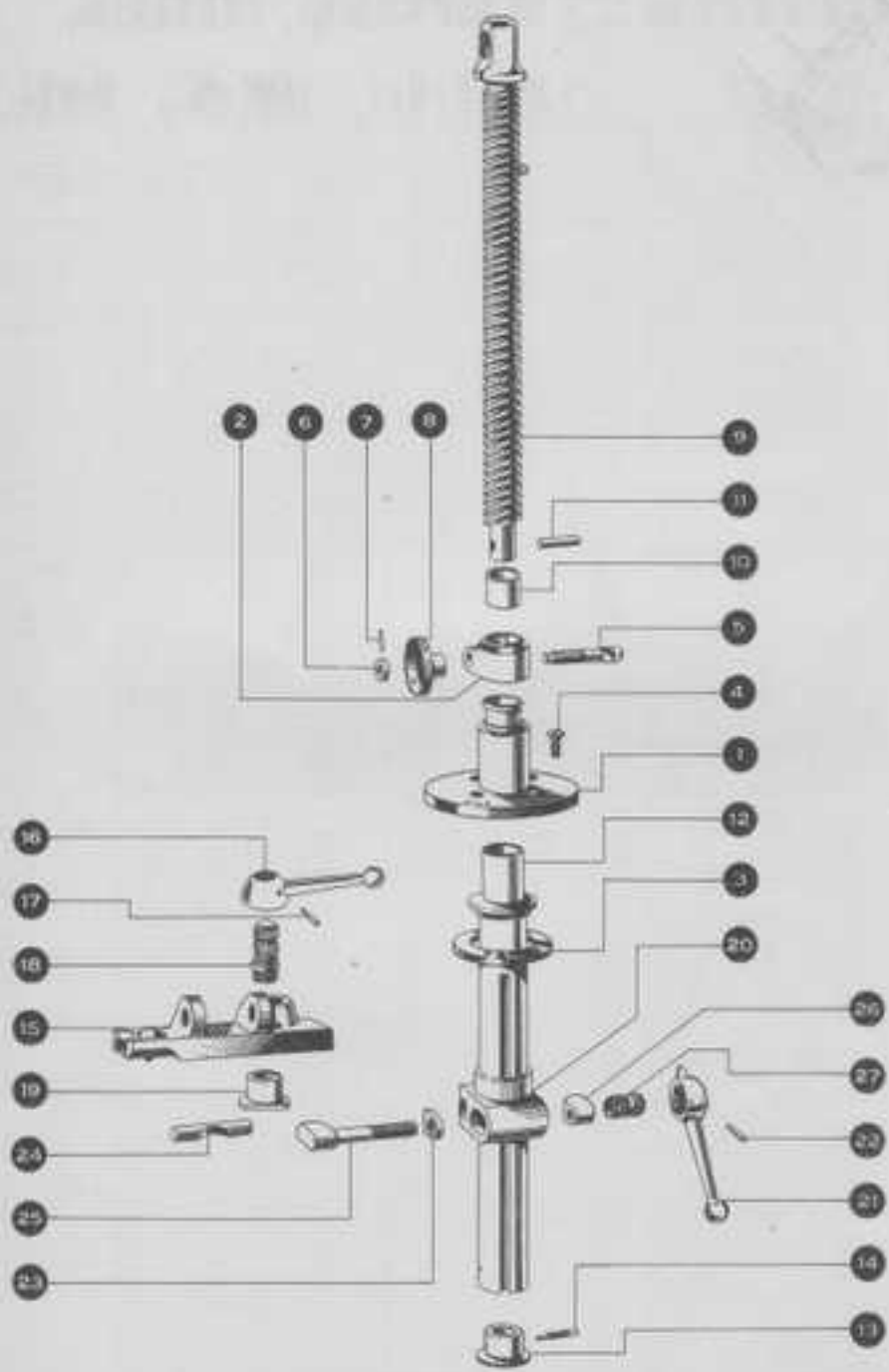
| <u>PLATE</u> | | <u>PACING PAGE</u> |
|--------------|--|--------------------|
| Key | MOORING, TRIPOD, 3000, 3000, 3000-in., N.G., M.L.I | 26 |
| V | FRAME ASSEMBLY #10. ... | 27 |
| W | BEAR ELEVATING M.L.I ... | 28 |

MOUNTING, TRIPOD, BREN, ·303-in., M.G., Mk.I

| IMP. NO. | DESCRIPTION | VOCS. NUMBER | QTY. | EC. OFF. | LOADING NUMBER |
|----------|---|--------------|------|----------|----------------|
| | ACCESSORIES, BREN, .303-in., E.G. (continued) | | | | |
| | MOUNTING, TRIPOD, BREN, .303-in., E.G., Mk.I | BE 5077 GA | | | DC(E) 1806 |
| | FRANK ASSEMBLY | A | | | |
| 1 | CAUSE, leg, A.A. | * 9558 | St. | 1 | E.G.D. 1711 |
| 2 | SPRING | * 9609 | S.S. | 1 | " 1803 |
| 3 | CLIP, butt handle | | S.S. | 2 | |
| 4 | PISTON-PINCH | | St. | 2 | Obsolescent |
| 5 | SCREW, .104" d. x .29", rd. hd. | | St. | 4 | |
| 6 | WASHER | * 9720 | St. | 4 | |
| 7 | PLATE | | St. | 1 | |
| | JOINT, LEG, FRONT, ASSEMBLY | BA | | 1 | |
| 8 | NUT, clamping | * 9560 | St. | (1) 1 | * 1730 |
| 9 | SCREW, joint, front leg | * 9600 | St. | 1 | * 1754 |
| 10 | NUT, round | * 9573 | St. | 1 | * 1757 |
| 11 | PIN, .104" d. x .93" | * 9590 | St. | (1) 1 | * 1758 |
| 12 | SPRING, joint | * 9611 | S.S. | (1) 1 | * 1804 |
| | JOINT, LEG, REAR, ASSEMBLY | BA | | 2 | |
| 13 | NUT, clamping | * 9560 | St. | (1) 2 | * 1730 |
| 14 | SCREW, leg, A.A. (laminated with 15) | * 9590 | St. | 2 | * 1782 |
| 15 | HEAD | | St. | 2 | * 1753 |
| 16 | SPRING | * 9612 | S.S. | 2 | * 1805 |
| 17 | SPRING, joint | * 9611 | S.S. | (1) 2 | * 1804 |
| 18 | NUT, joint, legs, rear | * 9614 | St. | 2 | * 1807 |
| 19 | NUT, round | * 9574 | St. | 2 | * 1758 |
| 20 | PIN, .104" d. x .93" | * 9590 | St. | (1) 2 | * 1758 |
| 21 | SCREW, fixing | * 9599 | St. | 2 | * 1793 |
| 22 | WASHER | * 9585 | St. | 1 | * 1772 |
| 23 | SCREW | * 9601 | St. | 1 | * 1795 |
| 24 | STOP | * 9613 | St. | 1 | * 1806 |
| 25 | WASHER, spring | * 9616 | S.S. | 1 | * 1822 |
| | HEAD, ELEVATING - (see Plate V) | | | | |
| 26 | LEG, A.A., upper | * 9564 | St. | 1 | E.G.A. 1846 |
| 27 | LEG, A.A., lower | * 9563 | St. | 1 | " 1845 |
| 28 | LEG, rear, S.S. | * 9567 | St. | 1 | " 1849 |
| 29 | LEG, rear, S.S. | * 9568 | St. | 1 | " 1850 |
| | LEG, FRONT, ASSEMBLY | * 9565 BA | | 1 | |
| 30 | LEG, front, outer | | St. | 1 | " 1848 |
| 31 | CAUSE, leg, front, inner | * 9555 | St. | 1 | E.G.D. 1775 |
| 32 | SPRING | * 9610 | S.S. | 1 | " 1803 |
| 33 | SCREW, clamping, leg, front, inner | * 9596 | St. | 1 | " 1788 |
| 34 | NUT, round | * 9572 | St. | 1 | " 1755 |
| 35 | PIN, .104" d. x .93" | * 9590 | St. | (1) 1 | " 1758 |
| 36 | LEG, front, inner | * 9565 | St. | 1 | E.G.A. 1847 |
| 37 | BRACKET, A.A. | * 9550 | St. | 1 | E.G.D. 1706 |
| 38 | NUT, round | * 9569 | St. | 1 | " 1751 |
| 39 | PIN, No. 70 S.W.S. | GB 1912 | St. | 1 | " 1796 |
| 40 | SCREW, traversing | BE 9606 | St. | 1 | " 1770 |
| 41 | SCREW, .315" d. x .77" | * 9605 | St. | 4 | " 1770 |
| 42 | NUT | | St. | 4 | " 1756 |
| 43 | PIN, keep, split, 1/32" x 5/8" | GI/DA 0280 | St. | 4 | |
| 44 | SCREW, stop, traversing slide | BE 9604 | St. | 2 | " 1798 |
| | STOP, traversing | * 9617 A | St. | 2 | E.G.A. 1702 |
| 45 | WASHER | * 9607 | St. | 2 | E.G.D. 1723 |
| 46 | NUT, clamping (with vice pin) | * 9622 | St. | 2 | " 1728 |
| 47 | SCREW, clamping | * 9623 | St. | 2 | " 1726 |

f laminated complete with 16mm, 23, 24 and 25
 GB " " " " " 37, 38 and 39.
 BE " " " " " 43, 46 and 47.

Plate W



MOUNTING, TRIPOD, BREN, -303-in., M.G., Mk.I

| REF. NO. | DESIGNATION | VOLU. NUMBER | MAT. | QTY | DRAWING NUMBER |
|----------|--|--------------|------|-----|----------------|
| ... | ACCESSORIES, BREN, .503-in., M.G. (continued) | | | | |
| ... | MOUNTING, TRIPOD, BREN, .503-in., M.G., Mk.I * | | | | |
| ... | GEAR, elevating, Mk.I ... | BB 9558 SA | | 1 | E.D.A.1644 |
| 1 | NUT, elevating, Mk.I ... | " 9570 | St. | 1 | M.G.D.1752 |
| 2 | CAP ... | " 9551 | St. | 1 | " 1715 |
| 3 | RING ... | " 9593 | St. | 1 | " 1783 |
| 4 | SCREEN ... | " 9605 | St. | 1 | " 1797 |
| 5 | SCREEN, clamping ... | " 9594 | St. | 1 | " 1788 |
| 6 | COLLAR ... | " 9555 | St. | 1 | " 1717 |
| 7 | PIN, .104" d.x .90" ... | " 9576 | St. | 1 | " 1763 |
| 8 | NUT ... | " 9571 | St. | 1 | " 1755 |
| 9 | SCREEN, elevating, Mk.I # ... | " 9598 | St. | 1 | " 1791 |
| 10 | COLLAR ... | " 9557 | St. | 1 | " 1720 |
| 11 | PIN, .192" d.x .747" ... | " 9575 | St. | 1 | " 1762 |
| 12 | SLAVE, elevating, Mk.I ... | " 9507 | St. | 1 | " 1800 |
| 13 | PLUG ... | " 9586 | St. | 1 | " 1776 |
| 14 | SCREEN ... | " 9600 | St. | 1 | " 1796 |
| 15 | SLIDE, traversing, Mk.I 60 ... | " 9608 | St. | 1 | " 1801 |
| 16 | HANDLE, clamping ... | " 9561 | St. | 1 | " 1731 |
| 17 | PIN, .104" d.x .79" ... | " 9577 | St. | (1) | " 1764 |
| 18 | SCREEN, clamping (issued with 19) ... | " 9597 | St. | 1 | " 1790 |
| 19 | NUT ... | " 9137 | St. | 1 | " 1759 |
| 20 | TUMBLER, Mk.I 680 ... | " 9615 | St. | 1 | " 1820 |
| 21 | HANDLE, clamping, elevating sleeve ... | " 9559 | St. | 1 | " 1729 |
| 22 | PIN, .104" d.x .79" ... | " 9577 | St. | (1) | " 1764 |
| 23 | KEY, elevating sleeve ... | " 9568 | St. | 1 | " 1741 |
| 24 | PIN, tumbler ... | " 9584 | St. | 1 | " 1771 |
| 25 | SCREEN, clamping, elevating sleeve ... | " 9595 | St. | 1 | " 1787 |
| 26 | COLLAR ... | " 9556 | St. | 1 | " 1718 |
| 27 | NUT ... | " 9136 | St. | 1 | " 1734 |
| | # Issued complete with Items 7, 2, 3, 4, 5, 10, 11 and 12. | | | | |
| | 68 " " " " 16, 17, 18 and 19. | | | | |
| | 680 " " " " 21, 22, 23, 25, 26 and 27. | | | | |

Numerical Index:

| CATALOGUE NO. | PAGE | CATALOGUE NO. | PAGE | CATALOGUE NO. | PAGE |
|---------------|------|---------------|-------------|---------------|-------|
| AA 1560 | 22 | BE 4161 | 11 | BE 9007 | 22 |
| AA 1537 | 22 | BE 4195 | 22 | BE 9034 | 21 |
| AA 0053 | 23 | BE 4199 | 22 | BE 9039 | 21 |
| BA 0513 | 23 | BE 4200 | 22 | BE 9043 | 25 |
| BA 0917 | 23 | BE 4230 | 25 | BE 9043 | 25 |
| BA 8300 | 25 | BE 4240 | 25 | BE 9044 | 25 |
| BB 0051 | 23 | BE 4062 | 21 | BE 9047 | 25 |
| BE 0054 | 23 | BE 4094 | 21 | BE 9048 | 25 |
| BE 0096 | 25 | BE 4221 | 21 | BE 9049 | 25 |
| BE 0919 | 23 | BE 4068 | 23 | BE 9080 | 23 |
| BE 0200 | 23 | BE 4371 | 23 | BE 9082 | 23 |
| BE 0501 | 23 | BE 4160 | 22 | BE 9083 | 23 |
| BE 0502 | 23 | BE 4875 | 18 | BE 9084 | 23 |
| BE 6167 | 23 | BE 0595 | 18 | BE 9085 | 23 |
| BE 6173 | 23 | BE 6007 | 18 | BE 9086 | 23 |
| BE 2903 | 23 | BE 4904 | 17 | BE 9089 | 23 |
| BE 2553 | 21 | BE 5905 | 17 | BE 9093 | 23 |
| BE 4100 | 24 | BE 4906 | 17 | BE 9094 | 23 |
| BE 4100 | 24 | BE 4907 | 17 | BE 9096 | 24 |
| BE 4103 | 24 | BE 4908 | 17 | BE 9097 | 24 |
| BE 4104 | 24 | BE 4909 | 17 | BE 9098 | 24 |
| BE 4106 | 24 | BE 4910 | 5 | BE 9099 | 24 |
| BE 4107 | 24 | BE 4911 | 5 | BE 9103 | 7 |
| BE 4108 | 24 | BE 4912 | 5 | BE 9104 | 7 |
| BE 4110 | 24 | BE 4913 | 5 | BE 9105 | 9 |
| BE 4112 | 17 | BE 4914 | 5 | BE 9106 | 13 |
| BE 4113 | 18 | BE 4915 | 5 | BE 9107 | 9 |
| BE 4114 | 18 | BE 4916 | 5 | BE 9108 | 8 |
| BE 4115 | 18 | BE 4917 | 7 | BE 9109 | 7 |
| BE 4116 | 14 | BE 4918 | 12,20 | BE 9120 | 7 |
| BE 4117 | 19 | BE 4919 | 12,20 | BE 9121 | 7 |
| BE 4118 | 17 | BE 4920 | 12,20 | BE 9122 | 6,16 |
| BE 4119 | 17 | BE 4921 | 12,20 | BE 9123 | 10 |
| BE 4120 | 15 | BE 4922 | 10,18 | BE 9124 | 10 |
| BE 4121 | 15 | BE 4923 | 12,20 | BE 9125 | 11,19 |
| BE 4122 | 19 | BE 4924 | 12,20 | BE 9126 | 10 |
| BE 4123 | 18 | BE 4925 | 11 | BE 9127 | 10 |
| BE 4124 | 17 | BE 4926 | 11,19 | BE 9128 | 12,20 |
| BE 4126 | 13 | BE 4927 | 9,17 | BE 9129 | 9 |
| BE 4127 | 17 | BE 4928 | 9 | BE 9130 | 10 |
| BE 4128 | 19 | BE 4929 | 9 | BE 9131 | 7,14 |
| BE 4129 | 18 | BE 4930 | 9 | BE 9132 | 6 |
| BE 4130 | 17 | BE 4931 | 9,17 | BE 9133 | 9 |
| BE 4131 | 15 | BE 4932 | 17 | BE 9134 | 10 |
| BE 4132 | 14 | BE 4933 | 11,19 | BE 9135 | 11,19 |
| BE 4133 | 17 | BE 4934 | 17 | BE 9136 | 12,20 |
| BE 4134 | 14 | BE 4935 | 17 | BE 9137 | 11 |
| BE 4135 | 10 | BE 4936 | 7,14 | BE 9138 | 9,17 |
| BE 4136 | 19 | BE 4937 | 17 | BE 9139 | 10,18 |
| BE 4137 | 14 | BE 4938 | 18 | BE 9140 | 9 |
| BE 4138 | 17 | BE 4939 | 10,11,16,19 | BE 9141 | 11,19 |
| BE 4139 | 15 | BE 4940 | 18 | BE 9142 | 10 |
| BE 4140 | 17 | BE 4941 | 11 | BE 9143 | 9,17 |
| BE 4141 | 15 | BE 4942 | 14 | BE 9144 | 11 |
| BE 4142 | 17 | BE 4943 | 5,16 | BE 9145 | 21 |
| BE 4143 | 17 | BE 4944 | 24 | BE 9146 | 7 |
| BE 4144 | 17 | BE 4945 | 25 | BE 9147 | 9 |
| BE 4145 | 18 | BE 4946 | 22 | BE 9148 | 7 |
| BE 4146 | 14 | BE 4947 | 27 | BE 9149 | 11 |
| BE 4147 | 19 | BE 4948 | 24 | BE 9150 | 11,19 |
| BE 4148 | 18 | BE 4949 | 22 | BE 9151 | 8 |
| BE 4149 | 19 | BE 4950 | 28 | BE 9152 | 8 |
| BE 4150 | 14 | BE 4951 | 28 | BE 9153 | 9 |

Numerical Index:

| CATALOGUE NO. | PAGE | CATALOGUE NO. | PAGE | CATALOGUE NO. | PAGE |
|---------------|-------------|---------------|-------|---------------|-------------|
| EE 9435 | 10 | EE 9575 | 9,17 | EE 9604 | 27 |
| EE 9436 | 10 | EE 9576 | 11,19 | EE 9605 | 27 |
| EE 9437 | 7,14 | EE 9577 | 10 | EE 9606 | 27 |
| EE 9438 | 8,16 | EE 9578 | 11,19 | EE 9607 | 26 |
| EE 9460 | 7,14 | EE 9587 | 10 | EE 9608 | 26 |
| EE 9461 | 9 | EE 9530 | 8,16 | EE 9609 | 27 |
| EE 9462 | 11,19 | EE 9531 | 7 | EE 9610 | 27 |
| EE 9463 | 8 | EE 9532 | 10 | EE 9611 | 27 |
| EE 9464 | 9,17 | EE 9533 | 10 | EE 9612 | 27 |
| EE 9465 | 11,19 | EE 9534 | 11 | EE 9613 | 27 |
| EE 9466 | 11,19 | EE 9535 | 10 | EE 9614 | 27 |
| EE 9467 | 9 | EE 9536 | 22 | EE 9615 | 29 |
| EE 9468 | 11,19 | EE 9540 | 22 | EE 9616 | 27 |
| EE 9469 | 9,17 | EE 9543 | 22 | EE 9617 | 27 |
| EE 9470 | 10,11,18,19 | EE 9546 | 22 | EE 9620 | 23 |
| EE 9471 | 11,19 | EE 9548 | 22 | EE 9621 | 27 |
| EE 9479 | 11,19 | EE 9549 | 22 | EE 9622 | 27 |
| EE 9473 | 10 | EE 9590 | 27 | EE 9623 | 27 |
| EE 9474 | 9,17 | EE 9551 | 28 | EE 9624 | 29 |
| EE 9475 | 7,14 | EE 9552 | 27 | EE 9625 | 22 |
| EE 9477 | 7,14 | EE 9553 | 27 | EE 9626 | 22 |
| EE 9478 | 12 | EE 9555 | 28 | EE 9627 | 22 |
| EE 9479 | 10 | EE 9596 | 28 | EE 9628 | 12,20 |
| EE 9480 | 10 | EE 9557 | 28 | EE 9643 | 15 |
| EE 9481 | 10 | EE 9558 | 28 | EE 9649 | 11,19 |
| EE 9482 | 7,14 | EE 9559 | 28 | EE 9650 | 17 |
| EE 9483 | 9,17 | EE 9560 | 27 | EE 9651 | 9,17 |
| EE 9485 | 9 | EE 9561 | 28 | EE 9652 | 14 |
| EE 9486 | 7,14 | EE 9562 | 28 | EE 9653 | 10,18 |
| EE 9487 | 11,19 | EE 9563 | 27 | EE 9654 | 20 |
| EE 9489 | 11,19 | EE 9564 | 27 | EE 9660 | 29 |
| EE 9490 | 7 | EE 9565 | 27 | EE 9661 | 25 |
| EE 9491 | 10,18 | EE 9566 | 27 | EE 9662 | 25 |
| EE 9492 | 7,14 | EE 9567 | 27 | EE 9663 | 25 |
| EE 9493 | 9,17 | EE 9568 | 27 | EE 9666 | 29 |
| EE 9494 | 9,17 | EE 9569 | 27 | EE 9702 | 7 |
| EE 9495 | 9,17 | EE 9570 | 28 | EE 9715 | 7,14 |
| EE 9497 | 10 | EE 9571 | 29 | EE 9719 | 14 |
| EE 9498 | 10 | EE 9572 | 27 | EE 9720 | 27 |
| EE 9499 | 8,16 | EE 9573 | 27 | EE 9771 | 12,20 |
| EE 9500 | 9 | EE 9574 | 27 | EE 9773 | 12,20 |
| EE 9502 | 7 | EE 9575 | 28 | EE 9786 | 22 |
| EE 9503 | 7,14 | EE 9576 | 28 | EE 9787 | 22 |
| EE 9504 | 11 | EE 9577 | 28 | EE 9788 | 22 |
| EE 9505 | 10,18 | EE 9579 | 24 | EE 9789 | 22 |
| EE 9506 | 8,16 | EE 9580 | 27 | EE 9796 | 10,11,18,19 |
| EE 9507 | 9 | EE 9584 | 28 | EA 0830 | 15 |
| EE 9508 | 8,16 | EE 9585 | 27 | EA 0832 | 27 |
| EE 9509 | 8,16 | EE 9586 | 28 | EE 1912 | 27 |
| EE 9510 | 10 | EE 9587 | 22 | CAA 1087 | 16 |
| EE 9512 | 11,19 | EE 9591 | 22 | CAA 1088 | 16 |
| EE 9513 | 10 | EE 9592 | 27 | CAA 1089 | 16 |
| EE 9514 | 9,17 | EE 9593 | 28 | CAA 1094 | 9 |
| EE 9515 | 9,17 | EE 9594 | 28 | CAA 1095 | 9 |
| EE 9516 | 8 | EE 9595 | 28 | CAA 1096 | 9 |
| EE 9517 | 7,14 | EE 9596 | 27 | CAA 1097 | 9 |
| EE 9518 | 11,19 | EE 9597 | 28 | CAA 1110 | 7 |
| EE 9519 | 11,19 | EE 9598 | 28 | CAA 1111 | 7 |
| EE 9520 | 9 | EE 9599 | 27 | CAA 1112 | 7 |
| EE 9521 | 7,14 | EE 9600 | 27 | CAA 1400 | 22 |
| EE 9522 | 9 | EE 9601 | 27 | CAA 1657 | 22 |
| EE 9523 | 9,17 | EE 9602 | 28 | CAA 1409 | 21 |
| EE 9524 | 9,17 | EE 9603 | 28 | CAA 3600 | 22 |